

MILWAUKEE HOLIDAY LIGHTS FESTIVAL



MKE•IT MERRY & BRIGHT

MILWAUKEE HOLIDAY LIGHTS FESTIVAL

November 21, 2019 – January 1, 2020

milwaukeeholidaylights.com



journal sentinel



Milwaukee Holiday Lights Festival Kickoff Extravaganza

Thu, November 21 | 6:30pm

Pre-show entertainment beginning at 5:30pm

Pere Marquette Park

MKE your way downtown for a dazzling holiday celebration, where more than 500,000 lights will magically come to life right before your very eyes. Enjoy performances by Milwaukee Youth Symphony Orchestra, Jenny Thiel, cast members from "Black Nativity" and Milwaukee Repertory Theater's "A Christmas Carol," Anita's Dance Center, Milwaukee Flyers, Robin Adkins, illusionist David Seebach, and national recording artist Grace Weber. Fireworks and a visit from Santa will top off the night. Enjoy free cocoa and cookies courtesy of Taste of Home, and after the show, take in downtown's newly lit scenes with free Jingle Bus rides presented by Meijer and powered by Coach USA.

MKE-IT MAGICAL

For your convenience, \$3 parking will be available at the Interstate Parking structure located at The Avenue between 3pm and midnight. Enter from Plankinton Avenue or 2nd Street, pull a ticket and park. The promo rate will be applied when leaving the structure.

If you can't make the party, tune into WISN 12 for a live broadcast from 6:30pm to 7pm. "WISN 12 Live: Holiday Lights Kickoff" presented by Stein's Garden & Home will be co-hosted by Adrienne Pedersen and Sheldon Dutes.

#MKEholidaylights



Milwaukee Holiday Lights Festival Jingle Bus

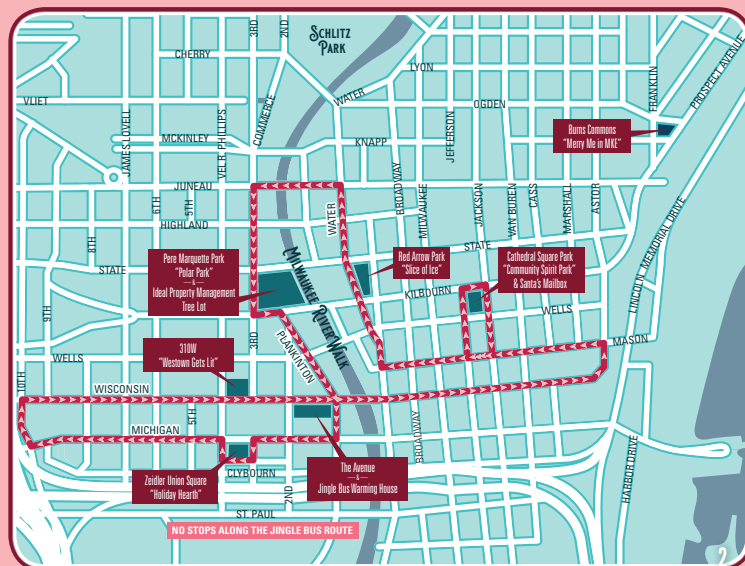
presented by Meijer

Thu – Sun, November 22 – December 29 | 6pm to 8:20pm

The Avenue – 161 W. Wisconsin Avenue

With chandeliers lining Wisconsin Avenue and three lighted parks – "Community Spirit Park" at Cathedral Square Park, "Holiday Hearth powered by We Energies" at Zeidler Union Square and "Polar Park" at Pere Marquette Park – downtown Milwaukee is a whimsical winter wonderland. Hop on the Jingle Bus, presented by Meijer and powered by Coach USA, and take in downtown's decorated scenes. For \$2 per person, enjoy a 40-minute tour narrated by Milwaukee Downtown's Public Service Ambassadors, complete with stories about landmarks and attractions along the way. Board the tour at the Jingle Bus Warming House at The Avenue, 161 W. Wisconsin Ave. Arrive early, as tickets are sold on a first-come, first-served basis each night beginning at 5:30pm. Enjoy free treats and visit with Santa while you wait. Plus, make sure to ask for the \$3 parking voucher for the attached parking structure, sponsored by Interstate Parking. Tours in Spanish will be available on select nights. Visit milwaukeeholidaylights.com for tour info.

*Please note: Jingle Bus rides will not operate on Thanksgiving. Tours will be free on Thursday, Nov. 21 and depart from Pere Marquette Park following the Milwaukee Holiday Lights Festival Kickoff Extravaganza.





MKE•IT MERRY & BRIGHT

MILWAUKEE HOLIDAY LIGHTS FESTIVAL

November 21, 219 – January 1, 2020

Nobody does the holidays quite like Milwaukee! In celebration of our 21st season, we're charging up the town to light millions of faces. From all-day adventures to evening escapes, guests of all ages will delight in our festive happenings. So MKE it a merry and bright season! Use this handy guide to plan your merriment.

#MKEholidaylights



Zeidler Union Square – “HOLIDAY HEARTH POWERED BY WE ENERGIES”

Presented by We Energies Foundation & Milwaukee County Parks

Pull up a seat next to the “Holiday Hearth.” Featuring larger-than-life living room furniture, take a selfie in the plush chair or pose with family and friends in the life-size frame.



Cathedral Square Park – “COMMUNITY SPIRIT PARK”

Presented by Ideal Property Management & Milwaukee County Parks

Area schools and nonprofits have decorated more than 90 trees. Pay close attention to each tree’s theme. The newly standing evergreens are adorned with handmade ornaments, which represent each group’s wish for the season. Plus, check out our Singing Tree, presented by Madison Medical Affiliates, which blinks to singing, music and clapping in real time!



SANTA’S MAILBOX

Presented by Serving Older Adults
November 21 – December 15
Cathedral Square Park

Downtown is connecting children to the joy and fascination of Santa and his elves. Place a child’s letter to Santa in Santa’s Mailbox at Cathedral Square Park. Be sure to include a return address because Santa and his extra special helpers will send each child a personalized reply in the mail. Holiday spirit delivers the letters to Santa – no postage required!

Pere Marquette Park – “POLAR PARK”

Presented by Zilber Property Group & Milwaukee County Parks

Catch a frolicking family of snow people playing games in Polar Park. Plus, shop for your holiday tree at Ideal Property Management’s tree lot, Nov. 23 – Dec. 23.



Burns Commons – “MERRY ME IN MKE”

Presented by Mandel Group with Support from VISIT Milwaukee

Find the “Me in MKE” interactive display near The Hop stop at Burns Commons, corner of Prospect and Ogden avenues, and share how you Milwaukee by using #MeInMKE.



TABLE OF CONTENTS

HOLIDAY HAPPENINGS	7-13
THEATER & COMEDY	14-18
MUSIC & MOVIES	21-25
ART & HERITAGE	26-28
FAMILY LEARNING	29-30
SPORTS	31-32
NEW YEAR’S EVE	35
DINING & NIGHTLIFE	36-42
SHOPPING	43-46
HOTELS	47
HOP ‘N SHOP	49-50
ORNAMENTS	51-53



2019

CELEBRATE
MARCUS PERFORMING ARTS
CENTER’S 50TH ANNIVERSARY
WITH THIS YEAR’S HOLIDAY
LIGHTS FESTIVAL ORNAMENT!
ORDER YOURS ON PAGE 53.



MILWAUKEE
HOLIDAY LIGHTS
FESTIVAL



The Pfister Afternoon Tea

Fri – Sun, Now through May 3
Seating times: 12:30pm, 1pm, 1:30pm & 2pm

The Pfister Hotel – Blu
 414.935.5950 | thepfisterhotel.com

Enjoy a tableside tea blending, presented in all-silver service by a Pfister Tea Butler. The afternoon is complete with traditional sandwiches and pastries. Reservations required.

Christkindlmarket Milwaukee

November 15 – December 24
Fiserv Forum
 312.494.2175 | christkindlmarket.com/milwaukee

Experience a traditional German holiday market at the Fiserv Forum, complete with delicious food and drinks, collectibles and gifts. Admission is free.



Photo: JMKE Photography/
 VISIT Milwaukee

Holiday and Children's Book Sale

Sat, November 16 | 9am to 4pm
Central Library
 414.286.3000 | mpl.org

Featuring a large selection of new children's books, as well as adult fiction and nonfiction titles, fill their stockings with tales of adventure. All proceeds benefit the library.

Annual City Christmas Tree Lighting

Thu, November 21 | 5pm
City Hall – Market Street
 414.286.2489 | city.milwaukee.gov

Join Mayor Tom Barrett for this timeless tradition. The City's official tree will be lit just before 5:30 p.m.



Milwaukee Holiday Lights Festival Kickoff Extravaganza

Thu, November 21 | 6:30pm
Pere Marquette Park
 414.220.4700 | milwaukeeholidaylights.com
 Music, dancing, extreme stunts, Santa and a thrilling fireworks display combine for the brightest night of the year. Best of all, it's free – right down to the cookies, cocoa and Jingle Bus rides. Come early for pre-show entertainment at 5:30 p.m.

Santa's Mailbox

Presented by Serving Older Adults
November 21 – December 15
Cathedral Square Park
 414.220.4700 | milwaukeeholidaylights.com
 Downtown is connecting children to the joy and fascination of Santa and his elves. Place a child's letter to Santa in Santa's Mailbox at Cathedral Square Park. Be sure to include a return address because Santa and his extra special helpers will send each child a personalized reply in the mail. Holiday spirit delivers the letters to Santa – no postage required!



Christmas at The Pabst Mansion

November 21 – January 5
Pabst Mansion
 414.931.0808 | pabstmansion.com

As one of Milwaukee's grandest holiday traditions, generations of families have come to bask in the splendor of the Mansion's holiday decorations, as well as the grandeur of the house itself. Three floors will be open to the public.

Flannels and Friends

Thu, November 21 | 4pm to 8pm
Best Place
 414.630.1609 | bestplacemilwaukee.com

Live music, great games, dinner and fantastic friends create a memorable night that makes a difference for young people with heart disease and their families. Proceeds benefit Camp Odayin's Residential Camp and Family Camp programs. 21+ ages event.

Jingle Bus Rides

Presented by Meijer
Thu – Sun,
November 22 – December 29
6pm to 8:20pm
The Avenue –
161 W. Wisconsin Avenue
 414.220.4700 | milwaukeeholidaylights.com
 Marvel at downtown's spectacular sights aboard the convenient Jingle Bus. For \$2 per person, visitors can relish in the holiday spirit while admiring a festive panorama. The 40-minute tour is narrated by Milwaukee Downtown's Public Service Ambassadors who acquaint riders with key attractions and landmarks. Enjoy free treats while you wait, plus discounted parking is available in the adjacent structure for \$3 with a voucher, courtesy of Interstate Parking.

Ideal Property Management Tree Lot

November 23 – December 23
Pere Marquette Park
 262.251.3578
ideal-landscaping.net

An old-fashioned tree lot featuring fresh Wisconsin trees, wreaths, garland and holiday décor. Closed Thanksgiving. Don't miss an ice carving demonstration on Dec. 7 from 11 a.m. to 3 p.m. and a live reindeer visit on Dec. 15 from 1:30 p.m. to 4 p.m.



Classical Christmas Floral Show

November 23 – January 5

Mitchell Park Domes

414.257.5608 | milwaukeedomes.org

Enjoy the festive atmosphere among vivid poinsettias and decked-out holiday trees.

Milwaukee Turkey Trot

Thu, November 28 | 9am

Veterans Park

224.757.5425 | wisconsinruns.com

Work up an appetite with a 5K or 8K run.

Thanksgiving Bountiful Brunch

Thu, November 28 | 11am to 5pm

The Pfister Hotel

414.935.5950 | thepfisterhotel.com

A casual yet elegant setting providing ample holiday cheer. There is much to be thankful for, from appetizers and entrees to side dishes and desserts – plus all the traditional trimmings.

Thanksgiving at Mason Street Grill

Thu, November 28 | 1pm to 7pm

Mason Street Grill

414.298.3131 | masonstreetgrill.com

An all-American grill for this quintessential holiday. Wood-grilled steaks, seafood and a special Thanksgiving prix fixe menu will be available.

8th Annual Black Friday Beerfest

Fri, November 29 | 4pm to 7pm

Harley-Davidson Museum

414.287.2789 | h-dmuseum.com

Forget the mall. The best way to spend Black Friday is with great friends and your favorite craft brews. Sample a variety of beers from many of the Midwest's best craft breweries.



The Pfister's Annual Tree Lighting Ceremony

Fri, November 29 | 5pm to 6:30pm

The Pfister Hotel

414.935.5950 | thepfisterhotel.com

Watch the expressions on young and old alike as Santa officially lights The Pfister holiday tree at 5:30 p.m. Sip warm drinks and nibble on a holiday treat. Nonperishables will be collected for Hunger Task Force.

Pabst Twilight Tours

November 29 & 30, December 6, 13, 20, 21 & 23 | 5pm to 7pm

Pabst Mansion

414.931.0808 | pabstmansion.com

This evening open house invites guests to visit the Pabst Mansion after dark to behold the enchanting glow of kindled Christmas trees accompanied by light refreshments.



Visit with Santa at Discovery World

November 29 – December 1, December 7 – 8, 14 – 15 & 18 – 23

Discovery World

414.765.9966 | discoveryworld.org

The holiday isn't complete without a visit with Santa! Come and greet Jolly Old St. Nick all the way from the North Pole!



Milwaukee Makers Market

Sat, November 30 | 10am to 4pm

Discovery World

414.765.9966 | discoveryworld.org

Meet Milwaukee jewelry makers, artists, designers and other skilled artisans. Shop one-of-a-kind, locally-made products including ceramics, women's clothing, leather goods, candles and more. Admission to the market is free.

Small Business Saturday

Sat, November 30

Historic Third Ward

414.273.1173 | historicthirdward.org

Support locally-owned businesses as Milwaukee retailers offer incentives and specials during this one-day sale.

Slice of Ice

December – Mid-March (weather permitting)

Red Arrow Park

414.289.8791 | countyparks.com

A slice of winter fun in the heart of downtown! Bring your own ice skates and skate for free or rent a pair at the warming house.



Christmas Around Milwaukee Bakery Bus Tour

Fridays, Saturdays & Sundays

throughout December

Various Locations

414.255.0534 | milwaukeefoodtours.com

Travel around the world and back on this guided tour. Sample (and if desired, purchase additional) holiday cookies, candies and pastries from a collection of Milwaukee bakeries.



Christmas Lights & Desserts Tour

Fridays, Saturdays & Sundays

throughout December

Various Locations

414.255.0534 | milwaukeefoodtours.com

See downtown's holiday lights, plus sample hot chocolate and desserts from local restaurants. The bus will be led by a singing tour guide for a holiday caroling sing-along.

Super-Duper Holiday

December 1 – January 2

BMO Harris Bank –

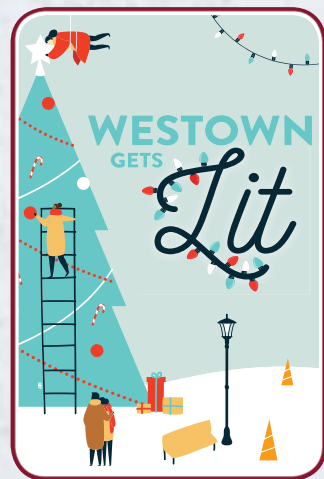
770 N. Water Street

414.765.7500 | bmoharris.com

Check out the superhero-themed décor that will fill up the entire bank lobby with a larger-than-life display.

17th Annual Nutcracker Tea

Sun, December 1 | 11am to 1:30pm
The Wisconsin Club
 414.902.2103 | milwaukeeballet.org/events
 The Nutcracker Tea features excerpts from the holiday classic, costumed characters, a decadent brunch, a ballet lesson, and more photo opportunities than you can count! Become part of the magic of "The Nutcracker" with this family event.



Westtown Gets Lit

Thu, December 5 | 4:30pm to 6:30pm
310W Plaza –
310 W. Wisconsin Avenue
 414.276.6696 | westtown.org
 Join Westtown leaders on the plaza of 310W for a new holiday celebration as the neighborhood's 40-foot-tall tree is lit. Enjoy free cookies, cocoa, s'mores and so much more! Plus, after Westtown is set aglow, head to The Avenue and board the Jingle Bus to see all of downtown's merriment.

MIAD Holiday Sale

Thu, December 5 | 6pm to 9pm
Fri, December 6 | 5pm to 9pm
Sat, December 7 | 10am to 5pm
Milwaukee Institute of Art & Design
 414.847.3200 | miad.edu
 Browse one-of-a-kind art and design work created by MIAD students and alumni. Proceeds support the artists/designers and MIAD student scholarships.

Christmas in the Ward

Fri, December 6 | 5:30pm to 8:30pm
Catalano Square – Menomonee & Broadway
 414.273.1173 | historict hirdward.org
 Get into the holiday spirit with live music, a tree lighting ceremony, fireworks, great shopping and horse-drawn carriage rides.

Light Up The Branches

Fri, December 6 | 5:30pm
War Memorial Center
 414.273.5533 | warmemorialcenter.org
 Join the War Memorial Center in honoring service with the lighting of five Christmas trees representing each branch of military service. Free event with hot chocolate, cookies, carolers, Santa and more!



Breakfast with Santa at The Pfister

Sat & Sun,
December 7 – 8, 14 – 15 & 21 – 22
8am to 9:30am & 11:30am to 1pm
The Pfister Hotel
 414.935.5950 | thepfisterhotel.com
 Join Santa and his elves for a festive feast, a gift for each child, crafts, letters to Santa, and countless memories. Small seating groups will ensure that everyone has an exceptional experience.

Mason Street Grill Christmas Carol Experience

Sat, December 7, 14 & 21
Mason Street Grill
 414.298.3131 | masonstreetgrill.com
 Reserve your spot for a wonderful winter's evening, enjoying dinner at Mason Street Grill followed by "A Christmas Carol" presented by Milwaukee Repertory Theater. Complimentary parking in The Pfister structure and transportation arranged for you.

Happy Harley Days at the Harley-Davidson Museum

Sat, December 7, 14 & 21
10am to 6pm
Harley-Davidson Museum
 414.287.2789 | h-dmuseum.com
 For three Saturdays in December, experience an all-new H-D Museum Family Fun Guide and roaming entertainment. Bring your wish list to Breakfast with Santa (reservations recommended) and after your visit with the Big Guy, enjoy hands-on holiday frame decorating at MOTOR Bar & Restaurant.

Brady Street Festivus

Sat, December 7 | 3pm to 1:30am
Brady Street
 414.272.3978 | bradystreet.org
 Air your grievances and participate in feats of strength for the highly coveted Festivus Pole. Dining and drink specials will also be offered. Plus, don't miss the 4th Annual Festivus One-Mile Run – 5,280 "Feats" of Strength at 3 p.m.



Santa Hustle 5K Milwaukee Run/Walk

Sun, December 8 | 8:30am to 11:30am
Veterans Park
 847.829.4536 | santahustle.com/milwaukee
 Be part of one of the largest, growing races as thousands of Santas hit the streets.



A Very Merry Milwaukee

Sun, December 8 | 10am to 1pm
Milwaukee County Historical Society
 414.273.8288 | milwaukeehistory.net
 Tour the Holiday Treasures & Traditions exhibit, see Billie the Brownie, hear live music and take a picture with Santa! Visitors can also listen to Mrs. Claus as she reads a holiday favorite, participate in a coloring activity or write a letter to Santa so he doesn't forget any wishes.

Old Milwaukee Mixer: A Streets Holiday Party

Thu, December 12 | 6:30pm to 9:30pm
Milwaukee Public Museum
 414.278.2728 | mpm.edu
 Get up close and personal with some of the Milwaukee Public Museum's unseen collections and learn more about holiday and winter traditions of years past.

European Village Alive!

December 13 & 14
Milwaukee Public Museum
 414.278.2728 | mpm.edu
 Learn about centuries-old European holiday traditions from costumed docents.

Cocoa with the Clauses

Presented by Madison Medical Affiliates
Sat, December 14 | 11am to 2pm
Cathedral Square Park
 414.220.4700 | milwaukeeholidaylights.com
 Straight from the North Pole, Santa and Mrs. Claus return for this annual cocoa klatch. The free outdoor event is a chance for kids to share their wish lists, and for moms and dads to snap a keepsake photo. Just remember to bring your camera! Elves and other holiday characters will also be there.

Pfister Holiday Marketplace

Sat & Sun, December 14 & 15
10am to 5pm

The Pfister Hotel – Lobby
414.935.5950 | thepfisterhotel.com

Discover, interact and connect with local artists and experience holiday fun and art in many forms. Explore local music and fine art, curated by Renee Bebeau. The perfect place to find the perfect gifts!

The Dickens Dinner

December 18 – 21 | 6:15pm
The Grain Exchange

414.727.6980 | bartolottas.com

Let the magic of this heartwarming evening enchant you as Charles Dickens, Victorian carolers, and delectable food and holiday spirits create a memorable occasion.



The Salvation Army 30th Annual Christmas Family Feast

Wed, December 25
Wisconsin Center
414.302.4300 | samilwaukee.org

The Salvation Army of Milwaukee County once again presents its annual Christmas feast for every member of the community to partake. Admission is free and all are welcome. Even Santa and Mrs. Claus will drop by, bearing gifts for the kids while they last. Volunteer and donation opportunities available.



Christmas Celebration Brunch at The Pfister

Wed, December 25 | 11am to 3pm
The Pfister Hotel

414.935.5950 | thepfisterhotel.com

A Pfister Christmas brunch begins with a complimentary mimosa or Bloody Mary, followed by a spectacular buffet featuring a delicious assortment of appetizers, salads, entrees and decadent desserts.

A Mason Street Grill Christmas

Wed, December 25 | 1pm to 7pm
Mason Street Grill

414.298.3131 | masonstreetgrill.com

Experience classic American favorites and enjoy a specially prepared Christmas menu at Mason Street Grill. Private dining rooms are also available for your family gathering, big or small.

Milwaukee Coach & Carriage

Ongoing
Downtown Milwaukee
414.272.6873 | mkecarriage.com

See downtown's holiday lights on a relaxing carriage ride! Half-hour and one-hour tours available. Rides start from the Hyatt Regency Milwaukee, Saint Kate – The Arts Hotel, or The Pfister Hotel. Carriages can hold up to four adults with wagons available for larger groups. Reservations required.

Nunsense

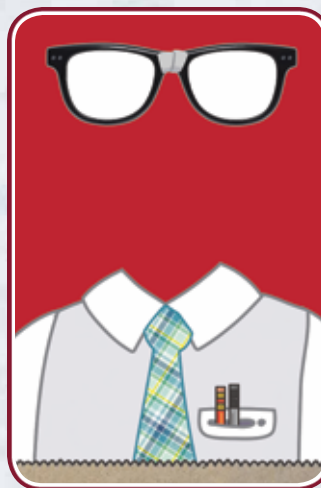
November 8 – January 12
The Rep – Stackner Cabaret
414.224.9490 | milwaukeeerep.com

The little sisters of Hoboken are in dire need of emergency funds after a culinary disaster nearly wipes out the convent. The nuns pull out all the stops in a fundraising variety show featuring tap dancing, habit humor, an audience quiz and a special appearance by the convent cook, Sister Julia, Child of God.

The Nerd

November 12 – December 15
The Rep – Quadracci Powerhouse
414.224.9490 | milwaukeeerep.com

When Willum has an unexpected party guest, who turns into an unwanted houseguest, he executes an elaborate plan to rid himself of the wacky nuisance. The twists and turns of this madcap comedy lead to an ending that leaves you feeling happily hoodwinked!



Disney's Newsies

November 15 – December 22
Broadway Theatre Centre – Cabot Theatre
414.291.7800 | skylightmusictheatre.org

Based on the rousing true story of newsboys who strike against unfair conditions in turn-of-the-century New York City, this Disney film became a Tony Award-winning Broadway hit.

Laughter on the 23rd Floor

November 21 – December 15
Next Act Theatre
414.278.0765 | nextact.org

This hit Broadway comedy is an homage to Neil Simon's early days writing jokes for Sid Caesar's "Your Show of Shows," alongside future legends including Carl Reiner and Mel Brooks.



Cristela Alonzo

Thu, November 21 | 8pm
The Underground Collaborative
414.909.2068 | milwaukeeecomedly.com

The hilarious Cristela Alonzo visits Milwaukee for one night only! A favorite guest host on "The View" and voice actor in the movie "Cars 3," Alonzo has made history as the first Latina to create, produce and star in her own network sitcom, "Cristela" for ABC.

Jeeves at Sea

November 22 – December 22
Broadway Theatre Center – Studio Theatre
414.291.7800 | milwaukeechambertheatre.com

In Margaret Raether's fourth adaptation of the classic P.G. Wodehouse stories, appearing for the first time in the Studio Theatre, can Jeeves prevent his master from being murdered – or worse, married?

Franco Escamilla

Sat, November 23 | 8pm
The Riverside Theater
414.286.3205 | pabsttheater.org

Franco Escamilla is a stand-up comedian known as the master of sarcasm by the way he tells his jokes and anecdotes. An event for all ages.



Orlando Repertory Theatre, 2018 Production
Photo: McKenzie Lakey

Elf – The Musical

November 23 – December 29
Marcus Performing Arts Center –
Todd Wehr Theater

414.267.2961 | firststage.org

Buddy the Elf has spent his entire life at the North Pole. When he discovers that he is not really an elf, he sets off for New York City to find his true identity. Follow his journey as he sets his sights on winning over his new family and helping New York remember the magic of Christmas.

Kyle Kinane

Sun, November 24 | 8pm
Turner Hall Ballroom

414.286.3205 | pabsttheater.org

Kyle Kinane is an internationally touring comedian who has appeared on “Drunk History,” “@Midnight,” “The Tonight Show with Jimmy Fallon,” “Conan,” “Workaholics,” “This Is Not Happening,” “Not Safe with Nikki Glaser” and “Comedy Bang! Bang!”

A Christmas Carol

November 26 – December 24
The Pabst Theater

414.224.9490 | milwaukeeep.com

Experience the annual Milwaukee Repertory Theater tradition of Charles Dickens’ holiday classic, “A Christmas Carol” at The Pabst Theater!



The Henry Ford’s Innovation Nation Live

November 23 & 24
Marcus Performing Arts Center –
Wilson Theater at Vogel Hall

414.273.7206 | marcuscenter.org

Like the award-winning television show, The Henry Ford’s Innovation Nation – LIVE! will inspire audiences with entertaining and educational stories about yesterday and today’s visionaries and innovators.



Photo: Matthew Murphy

The Band’s Visit

November 26 – December 1
Marcus Performing Arts Center –
Uihlein Hall

414.273.7206 | marcuscenter.org

In this joyously offbeat story, set in a town that’s way off the beaten path, a band of musicians arrives lost, out of the blue. Under the spell of the desert sky, and with beautiful music perfuming the air, the band brings the town to life in unexpected and tantalizing ways.

The Moscow Ballet’s Great Russian Nutcracker

Fri, November 29 | 7pm
The Riverside Theater

414.286.3205 | pabsttheater.org

With world-class artists, over 200 dazzling costumes and stunning sets, don’t miss this acclaimed Christmas classic.

The Second City “The Good, The Bad & The Ugly Sweater”

November 29 – December 1
Marcus Performing Arts Center –
Wilson Theater at Vogel Hall

414.273.7206 | marcuscenter.org

It’s the most wonderful time of the year-ish! Laugh along with The Second City as comedy’s best and brightest roast the chestnuts outta all the things we lovingly loathe about the holiday season.



White Rabbit Red Rabbit

Sat, November 30 | 4pm
Arc Theatre at Saint Kate –
The Arts Hotel

414.224.9490 | milwaukeeep.com

In “White Rabbit Red Rabbit” a single actor walks onstage, opens a sealed envelope and performs a play they’ve never seen or read before. A global sensation veiled in mystery, it’s a one-of-a-kind theatrical experience full of surprises.



Ensemble members from “A Christmas Carol” at The Rep. Photo: Michael Brosilow



Cirque Musica presents Holiday Wishes

Sun, December 1 | 7pm
Miller High Life Theatre
 800.745.3000 | millerhighlifetheatre.com
 "Holiday Wishes" brings a holiday story to life in a full theatrical circus event for the entire family. Featuring the world-renowned cast of Cirque Musica with your favorite holiday hits all performed live by a full symphony orchestra.

Larry The Cable Guy

Sun, December 1 | 8pm
The Riverside Theater
 414.286.3205 | pabsttheater.org
 Multiplatinum recording artist, Grammy nominee, Billboard award winner and one of the top comedians in the country, Larry the Cable Guy, comes to The Riverside Theater.



Black Nativity

December 5 – 15
Marcus Performing Arts Center – Wilson Theater at Vogel Hall
 414.273.7206 | marcuscenter.org
 Milwaukee's newest annual holiday musical, "Black Nativity" by Langston Hughes' song play is a testament to the power of gospel music, telling the classic story of the Nativity through a combination of African American scripture, poetry, dance, and song.



The Winter's Tale

December 6 – 15
Milwaukee Youth Arts Center
 414.267.2961 | firststage.org
 First Stage Young Company presents Shakespeare's tragicomedy.

The Nutcracker

December 7 – 26
Marcus Performing Arts Center – Uihlein Hall
 414.902.2103 | milwaukeeballet.org
 Milwaukee Ballet Orchestra plays Tchaikovsky's iconic score live with Milwaukee Children's Choir. Experience the wonder of the world-famous suites, including "Dance of the Sugar Plum Fairy," "Waltz of the Flowers," and "March of The Nutcracker."



'Twas the Month Before Christmas

December 18 – 22
Marcus Performing Arts Center – Wilson Theater at Vogel Hall
 414.273.7206 | marcuscenter.org
 Milwaukee playwright and actor Doug Jarecki delivers a hilarious and heartwarming holiday treat! TTMBC takes a unique look at Joseph and Mary, the three kings – and the innkeeper, and shares the "other" stories that led to that magical night in Bethlehem.

Jim Brickman: A Christmas Celebration

Thu, December 26 | 7:30pm
Marcus Performing Arts Center – Wilson Theater at Vogel Hall
 414.273.7206 | marcuscenter.org
 The best-selling piano artist of our time, Jim Brickman and his special guests, will dazzle audiences with holiday favorites, #1 hits, vibrant vocals, laughter and joy, in this bright, festive winter's night celebration.

An Evening with Chevy Chase

Fri, December 27 | 7:30pm
The Riverside Theater
 414.286.3205 | pabsttheater.org
 Light up your holidays with Chevy Chase live on stage.

The Dinner Detective

Sat, Now through December 28
6pm to 9pm
Tue, December 31
6pm to 9pm
DoubleTree Milwaukee Downtown
 866.496.0535 | thedinnerdetective.com
 Partake in solving a challenging crime while feasting on a fantastic dinner. Just beware, you may find yourself as prime suspect before you know it.



Dancer: Alana Griffith,
Photo: Mark Frohna



**ADD A LITTLE DAZZLE
TO YOUR WEEKENDS.**

**FIND DELIGHTFUL
WINTER FUN AT
VISITMILWAUKEE.ORG**



SLICE OF
ICE IN RED
ARROW
PARK

**VISIT MILWAUKEE IS A PROUD
SUPPORTER OF HOLIDAY LIGHTS**



Colors & Chords

Fri, November 22 | 6:30pm
Turner Hall Ballroom
 414.286.3205 | pabsttheater.org

Colors & Chords is a one-of-a-kind event that celebrates music and art by pairing bands with prominent local artists onstage. Multiple participatory art, music, and technology installations are staged in the balcony, inviting audience members to engage in imaginative exploration throughout the evening.



Photo: Ray DiPietro

'90s Kickback Concert

Fri, November 22 | 8pm
Miller High Life Theatre
 800.745.3000 | millerhighlifetheatre.com

The '90s Kickback Concert celebrates the best in R&B music from the decade that created some of the genre's most memorable and iconic hits.

MSO: Mozart's Requiem

November 22 – 24
Marcus Performing Arts Center – Uihlein Hall
 414.291.7605 | mso.org

Mozart's staggering Requiem contains the final notes Mozart ever composed. On the first half, Resident Conductor Yaniv Danur both conducts and performs Mozart's Piano Concerto No. 20, a moody work which ends with a smile.

The All Black Affair

Sat, November 23 | 9pm
Wisconsin Center
 414.908.6000 | wisconsincenter.com

Featuring a big name night of celebrities and guests.

Elvis Costello & The Imposters

Tue, November 26 | 7:30pm
Miller High Life Theatre
 800.745.3000 | millerhighlifetheatre.com

The tour is entitled, "Just Trust" in answer to the musical questions: "Will they play my favorite song?," or, "Are they going to frighten the horses with a lot of excellent songs that are rarely performed?," and not to mention, "Can I expect the hits of yesteryear and those of tomorrow?"

MSO: Home Alone – Film with Live Orchestra

Sat, November 30 | 7:30pm
Sun, December 1 | 2:30pm
The Riverside Theater
 414.291.7605 | mso.org

A true holiday favorite, this beloved comedy classic features John Williams's charming and delightful score, performed live by the MSO. Kevin McCallister is an 8-year-old boy who is accidentally left behind when his family leaves for Christmas vacation, and who must defend his home against two bungling thieves.



Photo: Erin Kavanaugh



Café Sopra Mare: Simon Farintosh

Sun, December 1 | 10am to 12:30pm
Villa Terrace Decorative Arts Museum
 414.271.3656 | villaterrace.org

A free music series during which to listen, read, visit or simply relax.

Cirque Dreams Holidayze

December 3 & 4 | 7:30pm
The Riverside Theater
 414.286.3205 | pabsttheater.org

Celebrate the holidays with an electric night (or two) of an excellent combination of music and theater.

Pajama Jamboree – Holiday

Wed, December 4 | 7pm
Marcus Performing Arts Center – Bradley Pavilion
 262.853.6085 | festivalcitysymphony.org

Enjoy a free, one-hour classical "pops" concert, including performances by the Whitefish Bay High School Choir, geared toward children and their families. Pajamas, teddy bears and blankets are welcome. Nonperishable food donations are encouraged for Hunger Task Force.

Christmas on the Screen

Wed, December 4 | 7:30pm
Charles Allis Museum
 414.278.8295 | charlesallis.org

A compilation of Christmas musical numbers from the film collection of Dale E. Kuntz. Consisting of complete musical numbers by Bing Crosby – "White Christmas," and Bob Hope – "Silver Bells." Plus, four versions of "Silent Night" by Shirley Temple, Deanna Durbin, Bing Crosby and Nelson Eddy – in German, and many more.

Lindsey Stirling – Warmer in the Winter Christmas Tour

Thu, December 5 | 8pm
The Riverside Theater
 414.286.3205 | pabsttheater.org

Witness the uber-talented violinist Lindsey Stirling captivate Milwaukee with cinematic renditions of your favorite holiday tunes.

MSO: Holiday Pops

December 6 – 8
The Riverside Theater
 414.291.7605 | mso.org

Bring the whole family to Milwaukee's musical holiday tradition! Tony-nominated Broadway soprano Rebecca Luker joins the MSO for Holiday Pops, a musical jubilee of your favorite carols, classics and sing-alongs, plus a handbell ensemble and other delights.

WMSE Big Band Grand Stand

Sun, December 8 | 4pm
Turner Hall Ballroom
 414.286.3205 | pabsttheater.org

The Chicago Jazz Orchestra swings into the holidays playing Ella Fitzgerald and Joe Williams.

Mix Mistletoe Show with Goo Goo Dolls

Mon, December 9 | 7pm
The Riverside Theater
 414.286.3205 | pabsttheater.org

"Slide" your way into the holiday season when 99.1 The Mix presents Mix-Mas featuring the Goo Goo Dolls.

Big Band Holidays

Tue, December 10 | 7:30pm
Marcus Performing Arts Center – Uihlein Hall
 414.273.7206 | marcuscenter.org
 Hailed as “an extraordinarily versatile orchestra” by The Los Angeles Times, the Jazz at Lincoln Center Orchestra is composed of 15 of jazz music’s leading soloists under the leadership of musical director Wynton Marsalis.



MSO: Leslie Odom, Jr. – A Holiday Special

Wed, December 11 | 7:30pm
The Riverside Theater
 414.291.7605 | mso.org
 Leslie Odom, Jr., best known as Broadway hit “Hamilton’s” original Aaron Burr, joins the MSO for a holiday concert with a jazz twist.

BenDeLaCreme & Jinkx Monsoon: All I Want for Christmas is Attention

Thu, December 12 | 7:30pm
Turner Hall Ballroom
 414.286.3205 | pabsttheater.org
 BenDeLaCreme and Jinkx Monsoon are back in an all-new, two-queen holiday extravaganza! A little song, a lot of eggnog and theaters full of people looking at them. Yup, all they want for Christmas is attention!

Dirt Monkey

Fri, December 13 | 8pm
Turner Hall Ballroom
 414.286.3205 | pabsttheater.org
 As a pioneer in the dubstep and bass music genres, Dirt Monkey has garnered support from many of his peers, including Griz, Excision, Liquid Stranger and more.

Christmas in the Basilica

December 13 – 15
Basilica of Saint Josaphat
 414.481.8801 | belcanto.org
 One of Bel Canto Chorus’ most popular concerts returns to the Basilica to feature John Rutter’s *Gloria* and traditional Christmas carol arrangements by Michelle Hynson, assistant conductor and accompanist, celebrating her 30th anniversary with Bel Canto Chorus.

MSO: Harry Potter and the Goblet of Fire – In Concert

December 13 – 15
The Riverside Theater
 414.286.3205 | pabsttheater.org
 Relive the magic of Harry Potter™ soaring across the big screen in high-definition and experience the music of a live symphony orchestra performing Patrick Doyle’s unforgettable score.

Florentine Opera Home for the Holidays

December 13, 14 & 21 | 7:30pm
Sun, December 22 | 2:30pm
Wayne & Kristine Lueders Florentine Opera Center
 800.32.OPERA | florentineopera.org
 A prelude to the holidays with a concert of winter tunes and carols, reminding audiences of the joys of this festive time of year.

Live Music: Roubik Music Studio Holiday Concert

Sat, December 14 | 11am to 12pm
Milwaukee Art Museum
 414.224.3200 | mam.org
 Listen as children ages three to 15 perform a winter concert celebration with 30 violins and violas.

Deadmau5 / Cube V3

Sat, December 14 | 7:30pm
Wisconsin Center
 414.908.6000 | wisconsincenter.com
 World-renowned electronic artist deadmau5 joins Gue5t Vox from Lights with tour support from Chris Lake and Mad Zach.

Hot Tuna

Sun, December 15 | 8pm
Turner Hall Ballroom
 414.286.3205 | pabsttheater.org
 For more than four decades, Hot Tuna has played, toured and recorded some of the best and most memorable acoustic and electric music ever – and they’re still going strong!

Festive Joy with Brioso

Sun, December 15 | 2pm to 3pm
Milwaukee Art Museum
 414.224.3200 | mam.org
 Enjoy an afternoon of holiday cheer as Brioso, the advanced violin ensemble of the Barcel Suzuki String Academy, fills the hall with holiday tunes.

Peekaboo

Thu, December 19 | 8pm
Turner Hall Ballroom
 414.286.3205 | pabsttheater.org
 After a string of massively successful EPs, singles, and remixes, all within a few short months, audiences around the world have been captivated by PEEKABOO’s fresh, distinctive and unique production style.



A Motown Christmas

Fri, December 20 | 8pm
The Riverside Theater
 414.286.3205 | pabsttheater.org
 Dazzling choreography and unforgettable harmonies all performed by members of The Temptations, The Miracles and The Capitols make “A Motown Christmas” a celebration like no other!



Christmas with the Nelsons – Starring Matthew & Gunnar Nelson

Fri, December 20 | 7:30pm
Miller High Life Theatre
 800.745.3000 | millerhighlifetheatre.com
 Christmas with the Nelsons tells the story of three family Christmases in the lives of America’s First Family of Entertainment, the Nelsons! Interweaving quick humor, soaring sibling vocals, and state-of-the-art big screen video, Matthew and Gunnar’s completely new show will take you on a sleigh ride through time.

Celtic Woman: The Best of Christmas Tour

Sat, December 21 | 8pm
The Riverside Theater
 414.286.3205 | pabsttheater.org
 Enchant your family with a festive and unparalleled musical experience with Ireland’s Celtic Woman, accompanied by a full symphony orchestra!



Live Music: Bruce Anthony Guitar

Sat, December 21 | 1pm to 2pm
Milwaukee Art Museum

414.224.3200 | mam.org

Celebrate the season with a solo guitar concert by musician Bruce Anthony.

North Shore Suzuki Strings Holiday Concert

Sun, December 22 | 2:30pm to 3:15pm
Milwaukee Art Museum

414.224.3200 | mam.org

Listen as students of all ages celebrate the holiday season with a violin and cello concert.

Annual Christmas Cinema: Houdini

Wed, December 25 | 12pm to 4pm
Jewish Museum Milwaukee

414.390.5730 | jewishmuseummilwaukee.org

A screening of "Houdini" – the 1953 biopic starring then husband-and-wife Tony Curtis and Janet Leigh as Harry and Bess Houdini. The film details Houdini's rise to fame as the world's greatest escape artist and magician with his beloved wife Bess at his side.

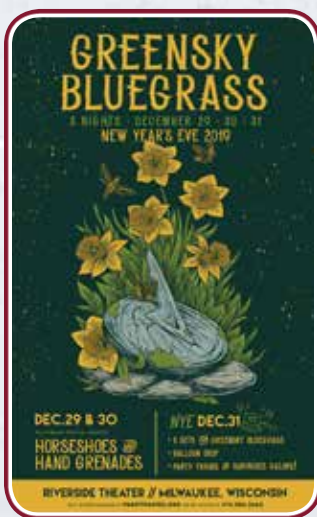


Trans-Siberian Orchestra

Fri, December 27 | 3:30pm & 8pm
Fiserv Forum

414.227.0511 | fiservforum.com

Trans-Siberian Orchestra (TSO), the multi-platinum, critically acclaimed progressive rock group, will be bringing its highly anticipated Winter Tour back to Milwaukee. Returning with all-new staging and effects is the unforgettable show that started it all, "Christmas Eve and Other Stories."



Greensky Bluegrass with Horseshoes and Hand Grenades

December 29 – 31

The Riverside Theater

414.286.3205 | pabsttheater.org

Greensky Bluegrass returns for a special three-night run to ring in the new year! Joined by very special guests and bluegrass mavericks Horseshoes & Hand Grenades for nights one and two, these shows promise a high-energy display of bluegrass showmanship that will have your toes tapping from sundown to sunrise.

The Gufs & Willy Porter Band

Tue, December 31 | 7:30pm

The Pabst Theater

414.286.3205 | pabsttheater.org

Ring in the New Year with The Gufs and the Willy Porter Band. A night of all of your favorite tunes from two Milwaukee favorites. Very special guest Brett Newski opens the festivities.

Radio Radio New Wave NYE

Tue, December 31 | 8pm to 1am

Pabst Milwaukee Brewery & Taproom

414.908.0025 | pabstmkebrewery.com

Kick 2019 to the curb and say hey to 2020 with an insane New Wave Dance Party!

Milwaukee City Tour

Ongoing, Fri & Sat | 10am
Various Locations

414.698.8058 | untappedtours.com

A complete city tour filled with history, photo opportunities, cheese and beer!

My Heart is Not Blind

Now through November 30
Central Library

414.286.3000 | mpl.org

A photography and audio exhibition on blindness and perception by artist Michael Nye.

Sound | Asleep by Steven Foster & Tomiko Jones

Now through December 8
Saint Kate – The Arts Hotel

414.276.8686 | saintkatearts.com

Audio combines with still life photography for a multisensory experience.



The Hop Streetcar Tour

Thu, Now through December 19 | 10am

Sat, Now through April 25 | 2pm

Downtown Milwaukee

414.277.7795 | historicmilwaukee.org

Explore Milwaukee's distant and more recent past while enjoying a smooth ride on The Hop.

Kim Faler: Cope and Drag

Now through January 10
Saint Kate – The Arts Hotel

414.276.8686 | saintkatearts.com

Themes of anxiety, pressure and reliance are explored through architectural materials.



Magnificent Machines of Milwaukee

Now through January 26
Grohmann Museum

414.277.2300 | mspe.edu/grohmann-museum

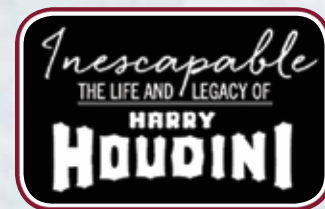
Featuring some of the most significant engineering marvels in Milwaukee's history detailed through photographs, documents, ephemera and a number of the actual machines highlighted in the book of the same name by engineer Thomas Fehring, who also serves as guest curator.

Inescapable: The Life and Legacy of Harry Houdini

Now through January 5
Jewish Museum Milwaukee

414.390.5730 | jewishmuseummilwaukee.org

Inescapable, curated by performer and magician David London, tells the story of how Ehrich Weiss became Harry Houdini and investigates the technologies, marketing prowess and entertainment trends that transformed him into a superstar.



Jeffrey Clancy: Measured Misalignments

Now through January 26
Villa Terrace Decorative Arts Museum
414.271.3656 | villaterrace.org
UW-Madison professor of Art in Metalsmithing and Jewelry, Jeffrey Clancy, examines the Villa Terrace – both objectively and anecdotally – by re-telling its stories in a way that combines facts with the artist's idiosyncratic observations and imagined likely possibilities.

Landfall Press: Five Decades of Printmaking

Now through February 9
Milwaukee Art Museum
414.224.3200 | mam.org
Celebrate the history and innovation behind one of America's most renowned printers-publishers on the occasion of its 50th anniversary year.

Ben Balcom: News from Nowhere

Now through February 23
Saint Kate – The Arts Hotel
414.276.8686 | saintkatearts.com
Local filmmaker Balcom explores Milwaukee's urban landscape in his latest film.

Portrait of Milwaukee

Now through March 1
Milwaukee Art Museum
414.224.3200 | mam.org
Photographs from the 1930s through the 2010s highlight some of the people, movements, businesses and neighborhoods that have helped make Milwaukee what it is today. From small businesses to community churches, tannery workers to New Wave rockers, the subjects of the pictures in the exhibition show a midwestern city that is just as dynamic and diverse as the people who call it home.

James Benning and Sharon Lockhart: Over Time

Now through March 1
Milwaukee Art Museum
414.224.3200 | mam.org
Separated by a generation, American artists James Benning (b. 1942), a Milwaukee native, and Sharon Lockhart (b. 1964) often cite each other's films as an influence on their own work. This exhibition, which will evolve in two installations over the course of a year, reveals connection points between their practices.

A Modern Vision: European Masterworks from the Phillips Collection

Now through March 22
Milwaukee Art Museum
414.224.3200 | mam.org
The exhibition features 50 masterworks by towering figures of European modernism, including Édouard Manet, Gustave Caillebotte, Claude Monet, Berthe Morisot, Vincent van Gogh, Paul Cézanne, Edgar Degas, Pierre Bonnard, Wassily Kandinsky, Amedeo Modigliani, and Pablo Picasso.

Delight, Inspire, Educate: The Allis Collection as Catalyst

Now through April 12
Charles Allis Museum
414.278.8295 | charlesallis.org
A showcase of the various aspects of the Allis art collection, from paintings and sculptures to decorative arts objects and print materials.



Hilaire-Germain-Edgar Degas, *Dancers at the Barre*, ca. 1900. Oil on canvas. 51" x 38 1/2" in. The Phillips Collection, Washington, DC. Acquired 1944.

The Bauhaus, László Moholy-Nagy, and Milwaukee

Now through June 7
Milwaukee Art Museum
414.224.3200 | mam.org
On the occasion of the 100th anniversary of the Bauhaus (1919–1933), the innovative art, architecture, and design school in Germany, the display in this gallery highlights one of its key figures: artist, designer, and theorist László Moholy-Nagy.

Meijer Free First Thursday

Thu, December 5 | 10am to 8pm
Milwaukee Art Museum
414.224.3200 | mam.org
Admission to the Milwaukee Art Museum is free for individuals and families (excluding group tours) on the first Thursday of each month, thanks to Meijer.

Central Library Architectural Tour

Ongoing, Sat | 11am to 12pm
Central Library
414.286.3000 | mpl.org
Learn about the fascinating history of the Milwaukee Public Library during this free Architectural Tour led by docents. Tours begin in the Rotunda. End your tour in the Bookseller Used Bookstore & Cafe and receive a coupon for a free book.

Skywaukee Walking Tour

Ongoing, Sat | 11am & 1pm
Downtown Milwaukee
414.277.7795 | historicmilwaukee.org
Discover downtown Milwaukee from indoors! Stroll through the skywalk system and learn about significant Milwaukee landmarks.



*What do you get when you have a
non-stop flight with an onboard
chocolate chip cookie?*



Your Home for Exceptional Non-Stop Flights
flymidwestexpress.com

Story Time in the Galleries

Ongoing, Sat | 10:30am
Milwaukee Art Museum
414.224.3200 | mam.org

Hear a story that relates to a work of art in the Museum, and then make a drawing inspired by what you have seen and heard.

Saturdays at Central

Ongoing, Sat | 10:30am
Central Library
414.286.3000 | mpl.org

Bring the whole family to the library to play and learn together. Family programs every Saturday at 10:30 a.m. in the Central Library Betty Brinn Children's Room encourage young children to explore and have fun!

Saturday Afternoons at Central for 'Tweens

Ongoing, Sat | 2pm
Central Library
414.286.3000 | mpl.org

Each Saturday afternoon focuses on out-of-school learning activities for children ages 8-12 that inspire participants to explore, learn, and create!



Spiders Alive!

Now through January 12
Milwaukee Public Museum
414.278.2728 | mpm.edu

Explore this exciting eight-legged exhibit with 17 species of live spiders from around the world.

Neighborhood Night

Thu, November 21 | 5pm to 8pm
Thu, December 19 | 5pm to 8pm
Betty Brinn Children's Museum
414.390.5437 | bbcmkids.org

Enjoy free access to all the Museum's hands-on exhibits and stop by the Be A Maker space to find tools, materials and techniques for endless ways to experiment and create.



Feasting on Science

Sat, November 23 | 10:30am & 1:30pm
Discovery World
414.765.9966 | discoveryworld.org

Experiment with some of your favorite Thanksgiving foods to learn how butter and whipped cream are so similar, why cranberries float, and why yeast rises. Find out the answers to these questions and more as the science behind your favorite holiday foods is explored.

Hidden MPM Tour: A Tribute to Survival

Sat, November 23 & 30 | 1pm
Milwaukee Public Museum
414.278.2728 | mpm.edu

A fascinating overview exploring how First Americans survived and thrived while shaping U.S. history and transforming the rest of the world.

Hidden MPM: Spiders Tour

Sat, November 23 & 30 | 11am
Milwaukee Public Museum
414.278.2728 | mpm.edu

Spiders have been tied to human culture and folklore for thousands of years. Explore the stories of spiders in the permanent exhibits.

Kohl's Thank You Thursday

Thu, December 5 | 9am to 8pm
Milwaukee Public Museum
414.278.2728 | mpm.edu

Receive free access to the permanent exhibits of MPM on the first Thursday of every month during Kohl's Thank You Thursday.

Wondering About the Winter Solstice

Sat, December 7 | 10:30am, 11:30am, 12:30pm & 3pm
Discovery World
414.765.9966 | discoveryworld.org

Learn all about the shortest day of the year as we examine what is really happening on our planet and in the solar system and then create a take-home model.

Hidden MPM Tour: Holidays in History

Sat, December 7, 21 & 28 | 11am
Milwaukee Public Museum
414.278.2728 | mpm.edu

Learn how holiday traditions brought from European immigrants to Milwaukee blended together to create our modern celebrations.

Kohl's Art Generation Family Sunday: Artful Holiday

Sun, December 8 | 10am to 4pm
Milwaukee Art Museum
414.224.3200 | mam.org

Discover the art of printmaking in the exhibition Landfall Press: Five Decades of Printmaking. Meet area printmakers and watch demonstrations, all while enjoying the sounds of the season. Then, learn how to make your own prints, using a variety of techniques; bring them home to frame or give as holiday gifts!



Play Date with Art: Bold Brushstrokes

Fri, December 13 | 10am to 12pm
Milwaukee Art Museum
414.224.3200 | mam.org

It's never too early to learn to love art! Drop in and make art together, in this monthly program designed especially for young visitors, ages five and under (with an adult). Stop by and sing along during Singing Time at 10:30 and 11:15 a.m.

Fizzy Frosty Ornaments

Sat, December 14 | 10:30am & 1:30pm
Discovery World
414.765.9966 | discoveryworld.org

Frosty the Ornament, was a fizzing happy soul. "With some simple paint, some soda and vin, he'll begin to fizz again." Create your own fizzy painted ornament to give as a gift or keep for yourself!

Aquarium Animal Tours

Sat, December 14
11am, 12pm, 1pm & 2pm
Discovery World
414.765.9966 | discoveryworld.org
Experience the Reiman Aquarium like you never have with a guided tour led by Discovery World's very own Freshwater Educator.

Tony's Creepy Crawly Zoo

Sat, December 14 | 11:30am
Discovery World
414.765.9966 | discoveryworld.org
Creeping, crawling, flying and fantastic! Join Tony "The Bug Whisperer" and learn about the insects in our backyard.



Milwaukee Bucks

Fiserv Forum

800.4NBATIX | nba.com/bucks

vs. Portland Trail Blazers

Thu, November 21 | 7pm

vs. Detroit Pistons

Sat, November 23 | 7:30pm

vs. Utah Jazz

Mon, November 25 | 7pm

vs. Atlanta Hawks

Wed, November 27 | 7pm

vs. Charlotte Hornets

Sat, November 30 | 7pm

vs. New York Knicks

Mon, December 2 | 7pm

vs. Los Angeles Clippers

Fri, December 6 | 7:30pm

vs. Orlando Magic

Mon, December 9 | 7pm

vs. New Orleans Pelicans

Wed, December 11 | 8:30pm

vs. Cleveland Cavaliers

Sat, December 14 | 7:30pm

vs. Dallas Mavericks

Mon, December 16 | 7pm

vs. Los Angeles Lakers

Thu, December 19 | 7pm

vs. Indiana Pacers

Sun, December 22 | 6pm

vs. Orlando Magic

Sat, December 28 | 7:30pm

vs. Minnesota Timberwolves

Wed, January 1 | 7pm



Milwaukee Wave

UWM Panther Arena

414.224.WAVE | milwaukeewave.com

vs. Florida Tropics

Sat, December 7 | 7:07pm

vs. Mesquite Outlaws

Tue, December 31 | 3:07pm

Milwaukee Admirals

UWM Panther Arena

414.227.0550 | milwaukeeadmirals.com

vs. Grand Rapids Griffins

Sat, November 23 | 6pm

vs. Manitoba Moose

Wed, November 27 | 7pm

vs. Iowa Wild

Fri, December 6 | 7pm

vs. Chicago Wolves

Fri, December 13 | 7pm

vs. San Antonio Rampage

Wed, December 18 | 7pm

vs. Cleveland Monsters

Fri, December 20 | 7pm

vs. Grand Rapids Griffins

Sat, December 28 | 6pm



Marquette University – Men's Basketball

Fiserv Forum

414.288.4668 | gomarquette.com

vs. Robert Morris

Sat, November 23 | 1pm

vs. Jacksonville

Wed, December 4 | 8pm

vs. Grambling State

Tue, December 17 | 7pm

vs. North Dakota State

Fri, December 20 | 8pm

vs. Central Arkansas

Sat, December 28 | 1pm

Marquette University – Women's Basketball

Al McGuire Center

414.288.4668 | gomarquette.com

vs. Mississippi State

Mon, November 25 | 7pm

vs. Belmont

Sat, December 21 | 2pm

UWM Men's Basketball

UWM Panther Arena

414.299.5886 | mkepanthers.com

vs. Eastern Illinois

Sat, December 14 | 7pm

UWM Women's Basketball

Klotsche Center

414.229.5886 | mkepanthers.com

vs. Northern Illinois

Thu, December 5 | 7pm

vs. Marquette

Sun, December 8 | 4pm

vs. Bowling Green

Sat, December 14 | 1pm

vs. North Dakota

Sat, December 21 | 2pm

vs. Wright State

Sat, December 28 | 2pm

vs. Northern Kentucky

Mon, December 30 | 7pm

MSOE Men's Basketball

Hotchkiss Arena

800.332.6763 | go-raiders.com

vs. Rockford

Sat, November 23 | 2pm

vs. Monmouth (Ill.)

Sun, November 24 | 2pm

vs. Marian

Sat, November 30 | 2pm

vs. Aurora

Sat, December 14 | 2pm

MSOE Women's Basketball

Hotchkiss Arena

800.332.6763 | go-raiders.com

vs. Rockford

Sat, November 23 | 4:15pm

vs. Marian

Tue, November 26 | 7pm

vs. Aurora

Sat, December 14 | 4:15pm



WWE Friday Night Smackdown

Fri, December 13 | 6:45pm

414.227.0511 | fiservforum.com

Yoga @ The Museum

Sat, December 14 | 8:15am to 9:30am

Milwaukee Art Museum

414.224.3200 | mam.org

Join omTownYogis for an all-levels yoga class in beautiful Windhover Hall. Pre-registration is encouraged.



Harlem Globetrotters

Tue, December 31 | 1pm & 6pm

Fiserv Forum

414.227.0511 | fiservforum.com



Celebrate the Season *at the* Milwaukee County Historical Society

Milwaukee Holiday
Treasures & Traditions Exhibit
December 2 - 28

Enjoy our festive decor as you explore Milwaukee's holiday past including the Christmas Parade, vintage toys, and Santa's favorite helper, Billie the Brownie.

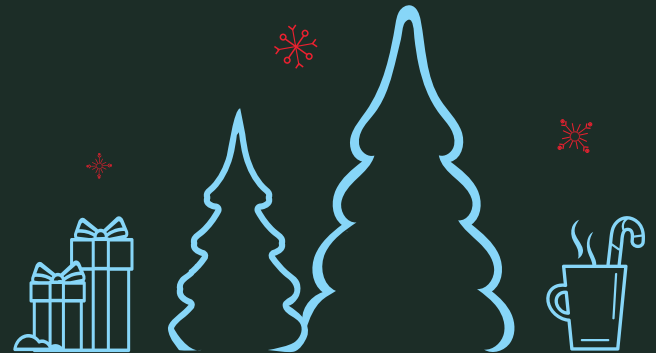
Don't miss Santa!
A Very Merry Milwaukee
Picture with Santa Event
December 8th, 10 a.m. to 1 p.m.
Free - Kids from 1 to 92 are welcome!

Find out more at www.milwaukeehistory.net



Give \$100 in Marcus Gift Cards, Get A

\$25
BONUS
CARD



To be used at all Marcus Hotels, Restaurants, and Spa Locations

Shop today at MarcusGiftCards.com.

New Year's Eve/Day at Mason Street Grill

Tue, December 31 | 5pm to 10pm
Wed, January 1 | 5pm to 9pm
Mason Street Grill

414.298.3131 | masonstreetgrill.com

With old acquaintances or new, enjoy wood-grilled classics for all your New Year's celebrations. Ring in the New Year with live music in the bar and a champagne toast at midnight. Private dining rooms are also available.



New Year's Eve at Blu

Tue, December 31 | 5pm to 12:30am
The Pfister Hotel – Blu

414.298.3196 | blumilwaukee.com

Visit Blu for a night of elevated entertainment. Enjoy reserved seating with bottle service starting at 8:30 p.m. and the lush vocals of Donna Woodall. VIP packages available.

Radiance NYE

Tue, December 31 | 6pm
Wisconsin Center

414.908.6000 | wisconsincenter.com

Ring in the New Year with bass! Gather your friends, choose your resolutions and head to the Wisconsin Center for ground shaking bass and beautiful vibes!



Beer Baron's Ball

Tue, December 31 | 6pm
Jackson's Blue Ribbon Pub

414.276.7271 | jacksonsmke.com

Enjoy some roaring-'20s fun this New Year's Eve. It will be a fancy night on the town. A full dinner buffet, fit for the Beer Baron and his friends, plus prizes for the best 1920s outfits. So, come dressed to impress!

Beyonce vs. Rihanna vs. Lizzo

Tue, December 31 | 9pm
Turner Hall Ballroom

414.286.3205 | pabsttheater.org

Milwaukee's biggest dance party returns to Turner Hall for a special NYE edition! DJ Frank Straka is at the decks for a night exclusively devoted to the music of these three iconic divas.



New Year's Day Brunch

Wed, January 1 | 10am to 2pm
The Pfister Hotel

414.935.5950 | thepfisterhotel.com

Enjoy a spectacular spread of chef-prepared classics and savor a mimosa or Bloody Mary or choose from much more.

THE BREWERY DISTRICT

Best Place

917 W. Juneau Avenue
414.630.1609 | bestplacemilwaukee.com

Glass + Griddle

1130 N. 9th Street
414.988.1551 | glassgriddle.com

Jackson's Blue Ribbon Pub

1203 N. 10th Street
414.276.7271 | jacksonsmke.com

Milwaukee Brewing Co.

1128 N. 9th Street
414.226.2337 | mkebrewing.com

Pabst Milwaukee Brewery & Taproom

1037 W. Juneau Avenue
414.908.0025 | pabstmkebrewery.com



CATHEDRAL SQUARE DISTRICT

600 EAST Café

600 E. Wisconsin Avenue
844.600.EAST | 600eastcafe.com

Alem Ethiopian Village

307 E. Wisconsin Avenue
414.224.5324 | alem-ethiopianvillage.com

Amilinda

315 E. Wisconsin Avenue
414.369.3683 | amilinda.com

Artisan Ramen

530 E. Mason Street
414.888.8800 | artisan-ramen.com



Bacchus

925 E. Wells Street
414.765.1166 | bacchusmke.com

Bad Genie

789 N. Jefferson Street
414.539.6022

The Belmont Tavern

784 N. Jefferson Street
414.988.6161 | thebelmonttavern.com

Blu – The Pfister Hotel

424 E. Wisconsin Avenue
414.298.3196 | blumilwaukee.com

Bollywood Grill

1038 N. Jackson Street
414.271.8200 | bollywoodgrill.us

Brunch Milwaukee

714 N. Milwaukee Street
414.210.5381 | brunchitup.com

Buckley's Restaurant & Bar

801 N. Cass Street
414.277.1111 | buckleymilwaukee.com

Café at the Plaza

1007 N. Cass Street
414.276.2101 | cafeattheplaza.com

Café Calatrava

700 N. Art Museum Drive
414.224.3858 | mam.org

Café at The Pfister

424 E. Wisconsin Avenue
414.390.3878 | thepfisterhotel.com

Carnevor

718 N. Milwaukee Street
414.223.2200 | carnevor.com

Chipotle

600 E. Ogden Avenue
414.223.4710 | chipotle.com

CITY.NET Café

306 E. Wisconsin Avenue
414.336.1723 | citynetjazz.com

Classy Girl Cupcakes

825 N. Jefferson Street
414.270.1877 | classygirlcupcakes.com

Coffee & Bagels

544 E. Ogden Avenue
414.276.9888 | cariboucoffee.com

County Clare

1234 N. Astor Street
414.272.5273 | countyclare-inn.com

Cubanitas

728 N. Milwaukee Street
414.225.1760 | getcubanitas.com



Davians 411 Café

411 E. Wisconsin Avenue
414.276.3354 | 411.davians.com

Dogg Haus

790 N. Jefferson Street
414.270.3455 | thedogghaus.com
755 N. Water Street
414.226.2664 | thedogghaus.com

Downtown Kitchen

777 E. Wisconsin Avenue
414.287.0303 | downtownkitchenmke.com

East Town Kitchen & Bar

323 E. Wisconsin Avenue
414.847.3162 | easttownkitchenandbar.com

Elsa's on the Park

833 N. Jefferson Street
414.765.0615 | elsas.com

Fairgrounds Coffee and Tea

916 E. State Street
414.231.3167 | fairgrounds.cafe

Flannery's Bar & Restaurant

425 E. Wells Street
414.278.8586 | flannerysmilwaukee.com

Freshii

250 E. Wisconsin Avenue
414.921.0819 | freshii.com

Harbor House

550 N. Harbor Drive
414.395.4900 | harborhousemke.com

Indulge

708 N. Milwaukee Street
414.390.9463 | getindulge.com

Jamba

544 E. Ogden Avenue
414.800.7991 | jamba.com

Jersey Mike's Subs

544 E. Ogden Avenue
414.539.3253 | jerseylikes.com

Java Corner Café

731 N. Jackson Street
414.847.0033

Jimmy John's

1425 N. Jefferson Street
414.347.1234 | jimmyjohns.com

The Knick

1030 E. Juneau Avenue
414.272.0011 | theknickrestaurant.com

Lucid Light Lounge

729 N. Milwaukee Street
414.431.5557 | lucidmke.com

Mason Street Grill

425 E. Mason Street
414.298.3131 | masonstreetgrill.com

Milwaukee Garden Grille

611 N. Broadway
414.271.6611
hiltongardeninmilwaukee.downtown.com

Monica's On Astor

1228 N. Astor Street
414.765.9402

My Office

763 N. Milwaukee Street
414.276.9646

Noodles & Company

544 E. Ogden Avenue
414.273.9705 | noodles.com

Oak & Shield Pub

600 E. Ogden Avenue
414.988.9982 | oakandshieldpub.com

Ouzo Café

776 N. Milwaukee Street
414.272.6896 | ouzocafe.com

Panera Bread

600 E. Ogden Avenue
414.224.0200 | panerabread.com

Pastiche at the Metro

411 E. Mason Street
414.214.3624 | pastichebistro.com

Pita Pit

231 E. Wisconsin Avenue
414.930.0910 | pitapitusa.com

Plum Lounge

780 N. Jefferson Street
414.210.3236 | plumlounge.com

Rare Steakhouse

833 E. Michigan Street
414.273.7273 | raresteaks.com

Real Chili

419 E. Wells Street
414.271.4042 | realchilimilwaukee.com

Red June Café

773 N. Jefferson Street
414.800.7906 | redjunecafemilwaukee.com

Shah Jee's

770 N. Jefferson Street
414.271.5354 | shahjeefoods.com

Skyway Café

626 E. Wisconsin Avenue
414.585.9268 | skywaycafe626.com

The Sofie - Coming Soon!

777 N. Jefferson Street
thesofie.com

The Soup House

324 E. Michigan Street
414.277.7687 | souphousemke.com



The Soup Market

111 E. Kilbourn Avenue
414.727.0700 | soupmarket.com

SportClub

750 N. Jefferson Street
414.808.1588 | sportclubmke.com

Stella Van Buren

550 N. Van Buren Street
414.847.5622 | stellavanburen.com

Starbucks

544 E. Ogden Avenue
414.221.9099 | starbucks.com
323 E. Wisconsin Avenue
414.278.5999 | starbucks.com
720 E. Wisconsin Avenue
414.208.7346 | starbucks.com

Stone Creek Coffee

777 N. Van Buren Street
stonecreekcoffee.com

Subway

1200 N. Van Buren Street
414.220.4555 | subway.com
506 E. Mason Street
414.276.8878 | subway.com

Swingin' Door Exchange

219 E. Michigan Street
414.276.8150 | swingindoorexchange.com

Taco Bar MKE

782 N. Jefferson Street
tacobarmke.com

Taylor's

795 N. Jefferson Street
414.271.2855 | taylorsmilwaukee.com

Third Coast Provisions

724 N. Milwaukee Street
414.323.7434 | thirdcoastprovisions.com

This Is It!

418 E. Wells Street
414.278.9192 | thisisitar.com

Victors

1230 N. Van Buren Street
414.272.2522

Ward's House of Prime

540 E. Mason Street
414.223.0135 | wardshouseofprime.com

XO Cocktail Parlor

326 E. Mason Street
414.988.4498

Zarletti
741 N. Milwaukee Street
414.225.0000 | zarletti.net

Zoup!
1433 N. Jefferson Street
414.944.7500 | zoup.com



CONVENTION CENTER DISTRICT

Avenue Bar & Grill
611 W. Wisconsin Avenue
414.271.7327 | avenuemilwaukee.com

BB's (Build a Breakfast – Build a Burger)
633 W. Wisconsin Avenue
414.270.1070 | bbmilwaukee.com

Benihana Japanese Steakhouse
850 N. Plankinton Avenue
414.270.0890 | benihana.com

Bistro/Bar 333
333 W. Kilbourn Avenue
414.270.6130

The Café – Hilton Milwaukee
509 W. Wisconsin Avenue
414.271.7250 | hiltonmilwaukee.com

The Capital Grille
310 W. Wisconsin Avenue
414.223.0600 | thecapitalgrille.com

Crab It Your Way
823 N. 2nd Street
414.763.9953 | crabityourway.com

The Daily Grind
800 W. Wells Street
414.278.6993 | mpm.edu

DOC's Commerce Smokehouse
754 N. Vel R. Phillips Avenue
414.935.2029 | docsbbq.net

Domino's Pizza
719 W. Wisconsin Avenue
414.271.8990 | dominos.com

Dunkin'
622 W. Wisconsin Avenue
414.347.1599 | dunkindonuts.com

Gyro MKE
700 W. Wisconsin Avenue
414.273.4976 | gyromke.com

Major Goolsby's
340 W. Kilbourn Avenue
414.271.3414 | majorgooolsbys.com

Miller Time Pub & Grill
509 W. Wisconsin Avenue
414.271.2337 | millertimepubandgrill.com

Milwaukee ChopHouse
633 N. 5th Street
414.226.2467 | milwaukeechophouse.com

Mo's – A Place For Steaks
720 N. Plankinton Avenue
414.272.0720 | mosaplaceforsteaks.com

Mo's Irish Pub
142 W. Wisconsin Avenue
414.272.0721 | mosirishpub.com

Monarch Lounge
Hilton Milwaukee City Center
509 W. Wisconsin Avenue
414.271.7250 | hiltonmilwaukee.com

Potbelly Sandwich Shop
135 W. Wisconsin Avenue
414.226.0014 | potbelly.com

R Café
814 W. Wisconsin Avenue
414.286.2005 | rcafeonline.com

Shah Jee's
228 W. Wells Street
414.800.5575 | shahjeefoods.com

Starbucks
509 W. Wisconsin Avenue
414.390.1804 | starbucks.com

Stone Creek Coffee
275 W. Wisconsin Avenue
414.298.9965 | stonecreekcoffee.com

Stone Creek Coffee Factory
422 N. 5th Street
414.431.2157 | stonecreekcoffee.com

Xankia
222 W. Wells Street
414.817.0241 | xankiamke.com

DEER DISTRICT/ OLD WORLD THIRD STREET

Ale Asylum Riverhouse
1110 N. Old World Third Street
414.269.8700 | riverhousemke.com

The Beer Garden
1133 N. Old World Third Street
414.908.0401 | thebeergardenmke.com

Brick 3 Pizza
1107 N. Old World Third Street
414.224.6040 | brick3pizza.com

Brüdd Café
1048 N. Old World Third Street
414.755.2424 | brudd-cafe.business.site

Buck Bradley's Saloon & Eatery
1019 N. Old World Third Street
414.224.8500 | buckbradleys.com

Canary Coffee Bar
720 N. Old World Third Street
canarycoffeebar.com

Cantina Milwaukee
1110 N. Old World Third Street
414.897.8137 | cantinamilwaukee.com

Calderone Club
842 N. Old World Third Street
414.273.3236 | calderoneclub.net



Carson's
301 W. Juneau Avenue
414.223.3311 | ribs.com

Drink Wisconsingly Pub
320 W. Highland Avenue
414.409.1740 | drinkwi.pub

George Webb Restaurant
812 N. Old World Third Street
414.278.0225 | georgewebb.com

Good City Brewing
333 W. Juneau Avenue
414.539.4343 | goodcitybrewing.com

The King & I
830 N. Old World Third Street
414.276.4181 | kingandirestaurant.com

The Loaded Slate
1137 N. Old World Third Street
414.273.5700 | theloadedslate.com

Mader's German Restaurant
1041 N. Old World Third Street
414.271.3377 | madersrestaurant.com

The Mecca Sports Bar and Grill
1134 N. Vel R. Phillips Avenue
414.908.0401 | themeccamke.com

Milwaukee Brat House
1013 N. Old World Third Street
414.273.8709 | milwaukeebrathouse.com

Oak Barrel Public House
1033 N. Old World Third Street
414.897.8320 | oakbarrelmilwaukee.com

Old German Beer Hall
1009 N. Old World Third Street
414.226.2728 | oldgermanbeerhall.com

Point Burger Express
322 W. State Street
414.488.8315 | pointburgerexpress.com

The Pub Club
1103 N. Old World Third Street
414.988.5000
mke.thepubclubmilwaukee.com

Punch Bowl Social
1122 N. Vel R. Phillips Avenue
414.204.7544 | punchbowlsocial.com

RWB
1044 N. Old World Third Street
414.226.6044 | rwbmke.com

San Giorgio Pizzeria Napoletana
838 N. Old World Third Street
414.276.2876 | sangiorgiopizza.com

Tavern at Turner Hall
1034 N. Vel R. Phillips Avenue
414.346.0800 | tavernmke.com

Trio Restaurant
1023 N. Old World Third Street
414.800.6240 | trio1023.com

Truth Lounge
1111 N. Old World Third Street
414.581.5540

Uncle Buck's on 3rd
1125 N. Old World Third Street
414.988.0355 | unclebucksouthird.com

w yx bar
Aloft Milwaukee Downtown
1230 N. Old World Third Street
414.226.0122
aloftmilwaueedowntown.com

Whitetail Milwaukee – Coming Soon!
1110 N. Old World Third Street

Who's On Third
1007 N. Old World Third Street
414.897.8373 | whosonthirdmke.com

SCHLITZ PARK DISTRICT

Birch + Butcher
459 E. Pleasant Street
414.323.7372 | birchandbutcher.com

Coffee With A Conscience
1555 N. Rivercenter Drive
414.659.5365 | coffeewithaconscience.net



WATER STREET DISTRICT

AJ Bombers
1247 N. Water Street
414.221.9999 | ajbombers.com

Alderaan Coffee
1560 N. Water Street
414.395.9955 | aldaeraancoffee.com

The Angry Taco
753 N. Water Street
414.800.7785 | angrytacome.com

Aria
139 E. Kilbourn Avenue
414.270.4422 | saintkatearts.com/dining

The Bar
139 E. Kilbourn Avenue
414.291.4797 | saintkatearts.com/dining

Bar Louie
1114 N. Water Street
414.296.8800 | barlouie.com

BarNone
1139 N. Water Street
414.226.6969 | barnonemilwaukee.com

Brothers Bar & Grill
1213 N. Water Street
414.224.1690 | brothersbar.com

BrownStone Social Lounge
524 N. Water Street
414.210.4824

Buffalo Wild Wings Grill & Bar
1123 N. Water Street
414.277.0293 | buffalowildwings.com

China Gourmet
117 E. Wells Street
414.272.1688 | china-gourmet.com

The Coffee Bean
624 N. Water Street
414.276.2233 | thecoffeebeanmke.com

Colour Palate
789 N. Water Street
414.502.8750 | colourpalate.com

District on Water
628 N. Water Street
414.252.0145 | districtmke.com

Duke's on Water
158 E. Juneau Avenue
414.274.7204

Dunkin'
111 E. Wisconsin Avenue
414.224.7924 | dunkindonuts.com

Elwood's Liquor & Tap
1111 N. Water Street
414.810.1436

Fire on Water
518 N. Water Street
414.291.4411 | fireonwaterstreet.com

FORE! Milwaukee
530 N. Water Street
414.272.FORE | foremilwaukee.com



Fusion Sushi & Deli
100 E. Wisconsin Avenue
414.224.6330

Giggly Champagne & Wine Bar
139 E. Kilbourn Avenue
414.270.4422 | saintkatearts.com/dining

Grassroots Salad Company
607 N. Water Street
414.249.4464 | eatgrassroots.com

Harp Irish Pub
113 E. Juneau Avenue
414.289.0700 | theharpirishpub.com

Ian's Pizza
146 E. Juneau Avenue
414.727.9200 | ianspizza.com

Jimmy John's
767 N. Water Street
414.227.1166 | jimmyjohns.com

McGillycuddy's
1135 N. Water Street
414.278.8888 | mcgillycuddysmilwaukee.com

Pizano's Pizza & Pasta
1154 N. Water Street
414.277.1777 | pizanoschicago.com

Pourman's Pub
1127 N. Water Street
314.471.5379 | pourmansmke.com

Proof Pizza
139 E. Kilbourn Avenue
414.270.4433 | saintkatearts.com/dining

Qdoba Mexican Eats
1150 N. Water Street
414.389.8744 | qdoba.com

Red Rock Saloon
1227 N. Water Street
414.431.0467 | redrockmilwaukee.com

Rock Bottom Restaurant & Brewery
740 N. Plankinton Avenue
414.276.3030 | rockbottom.com

Rodizio Grill
777 N. Water Street
414.431.3106 | rodiziogrill.com/milwaukee

Rogues Gallery
134 E. Juneau Avenue
414.763.1102

Rumpus Room
1030 N. Water Street
414.292.0100 | rumpusroommke.com

SafeHouse
779 N. Front Street
414.271.2007 | safe-house.com

Scooter's Pub
154 E. Juneau Avenue
414.274.7201

Starbucks
920 N. Water Street
414.272.0232 | starbucks.com

Subway
710 N. Plankinton Avenue
414.212.8495 | subway.com

T.D.R. – The Dark Room
139 E. Kilbourn Avenue
414.431.1211 | saintkatearts.com/dining

Trinity Three Irish Pubs
125 E. Juneau Avenue
414.278.7033 | trinitythreeirishpubs.com

Vagabond
1122 N. Edison Street
414.223.1122 | vagabondmke.com

Waterfront Deli
761 N. Water Street
414.220.9300 | milwaueewaterfrontdeli.com

Water Street Brewery
1101 N. Water Street
414.272.1195 | waterstreetbrewery.com

APPAREL

Althea's Fine Lingerie
777 N. Jefferson Street
414.935.2800 | altheasfinelingerie.com

Brew City Beer Gear
Milwaukee Public Market
400 N. Water Street
414.220.9075 | brewcityonline.com

Bucks Pro Shop
1111 N. Vel R. Phillips Avenue
414.918.6401 | shop.bucks.com

Miss Ruby
313 N. Plankinton Avenue, Ste. 203
414.755.2900 | missrubyboutique.com



BOOKS & MUSIC

Downtown Books
624 N. Broadway
414.224.1799 | downtownbooksonline.com

Musical Memories
833 E. Kilbourn Avenue
414.271.0666

DEPARTMENT STORES

TJ Maxx
The Avenue
161 W. Wisconsin Avenue
414.347.9603 | tjmaxx.com



FOOTWEAR

Allen Edmonds
424 E. Wisconsin Avenue
414.897.5650 | allenedmonds.com

Shoo
241 N. Broadway, #1B
414.765.2355 | shoostore.com

Trusted Kicks
532 N. Water Street
trustedkicks.com

FURNISHINGS & DÉCOR

Design Within Reach
167 N. Broadway
414.224.5353 | dwr.com

Iannelli's Custom Shoppe
625 N. Broadway
414.272.0543

Luminosity, Inc.
207 E. Buffalo Street
414.278.0992

Residence Milwaukee
123 E. Wells Street
414.444.5010

Restoration Hardware
224 E. Chicago Street
414.808.3890 | restorationhardware.com

Scandinavia Fine Furniture
767 N. Jefferson Street
414.276.7226

Shabahang & Sons Oriental Rugs
601 E. Ogden Avenue
414.347.1300 | shabahangorientalrugs.com

West Elm
342 N. Water Street
414.224.0216 | westelm.com

GALLERIES

David Barnett Gallery
1024 E. State Street
414.271.5058 | davidbarnettgallery.com

Morning Glory Gallery
Marcus Performing Arts Center
929 N. Water Street
414.765.7227 | marcuscenter.org

Saint Kate - The Arts Hotel
139 E. Kilbourn Avenue
414.276.8686 | saintkatearts.com



GOURMET FOODS

Edible Arrangements
722 N. Water Street
414.225.0300 | ediblearrangements.com

Fresh Thyme Farmers Market
470 E. Pleasant Street
414.290.3999 | freshthyme.com

Maurer's Urban Market
777 N. Van Buren Street
414.635.2770 | myurbanmarket.com

Metro Market
1123 N. Van Buren Street
414.273.1928 | metromarket.net

Milwaukee Public Market
400 N. Water Street
414.336.1111 | milwaukeepublicmarket.org

The Spice House
1031 N. Old World Third Street
414.272.0977 | thespicehouse.com

Usinger's Famous Sausage
1030 N. Old World Third Street
414.276.9105 | usinger.com

Wisconsin Cheese Market
215 W. Highland Avenue
414.272.3544 | wisconsincheesemart.com

HEALTH & WELLNESS

Walgreens
The Avenue
275 W. Wisconsin Avenue
414.273.5426 | walgreens.com

GIFTS & ACCESSORIES

Best Place
917 W. Juneau Avenue
414.223.4709 | bestplacemilwaukee.com

Discovery World Gift Shop
500 N. Harbor Drive
414.765.8770 | discoveryworld.org

Historic Milwaukee
235 E. Michigan Street
414.277.7795
historicmilwaukee.org

LOCALmke
407 E. Buffalo Street
414.249.4706 | localmke.com

Milwaukee Art Museum Store
700 N. Art Museum Drive
414.224.3210 | store.mam.org

Milwaukee Public Museum Gift Shop
800 W. Wells Street
414.278.2795 | mpm.edu

Planet Bead
710 N. Milwaukee Street
414.273.2323 | planetbead.com



PAPER, STATIONERY & SHIPPING SUPPLIES

Broadway Paper
191 N. Broadway
414.277.7699 | broadwaypaper.com

FedEx Office
312 E. Wisconsin Avenue
414.270.0404 | fedex.com/office



SPORTING ACTIVITIES

FORE! Milwaukee
530 N. Water Street
414.272.FORE | foremilwaukee.com

Vulture Space Bicycle Collective
651 N. Plankinton Avenue
414.301.1661 | vulturespace.org



SPAS & SALONS

Barney's Brother Salon
777 E. Wisconsin Avenue
414.276.6555 | barneysbrother.com

Di Carlo Salon & Barbershop
767 N. Water Street, #100
414.765.1985 | dicarlosalonbarbershop.com

East Town Spa
718 E. Wells Street
414.271.4247 | easttownspa.com



GLOSS Nail Spa
1545 N. Water Street
414.273.1741 | glossnailspa.net

Institute of Beauty and Wellness
327 E. St. Paul Avenue
414.227.2889 | ibw.edu

KingsHead Hair Salon
1246 N. Van Buren Street
414.273.7980 | kingshead.com

Les Ciseaux Styling Salon
821 E. Kilbourn Avenue
414.272.4340

Neroli Salon & Spa
327 E. St. Paul Avenue
414.319.7559 | nerolispa.com

Perfection by Je'lamar
230 W. Wells Street
414.765.0191 | j-lamar.com

Razor Sharp Barbershop
228 W. Wisconsin Avenue
414.277.7000

Salon Blanc
1541 N. Water Street
414.323.4241 | salonblancmke.com



SCOTTFREE Salon
726 N. Milwaukee Street
414.223.0896 | scottfreesalon.com

Shear Perfection
229 E. Michigan Street
414.274.1976

Violet Beauty Lounge
514 N. Water Street
414.239.8066 | violetbeautymke.com

WELL Spa + Salon
424 E. Wisconsin Avenue
414.277.9207 | pfisterwellspa.com

NEARBY SHOPPING

Historic Third Ward
414.273.1173 | historicthirdward.org
A historic neighborhood just south of downtown. Explore galleries, antique shops, novelty boutiques and salons.

Brady Street
414.BRADYST | bradystreet.org
An eclectic mix of boutiques offering furniture, pet accessories, apparel and vintage goods.



Ticket King
751 N. Broadway
414.273.6007 | theticketking.com

Uhle Tobacco Company
114 W. Wisconsin Avenue
414.273.6665 | uhles.com

Urban Milwaukee
755 N. Milwaukee Street
414.395.0632 | urbanmilwaukeeestore.com

JEWELRY

Kesslers Diamonds
450 E. Mason Street
414.721.9450 | kesslersdiamonds.com

Kloiber Jewelers
777 E. Wisconsin Avenue
414.276.2457 | kloiberjewelers.com

Paks Jewelers
224 W. Wisconsin Avenue
414.224.0101 | paksjewelers.com

Powers Jewelry Designers
301 E. Wisconsin Avenue
414.272.4510 | milwaukee-jewelry.com

Schwanke-Kasten Jewelers
623 N. Milwaukee Street
414.271.1242 | schwanke-kasten.com

Steins Jewelry and Loan
715 W. Wisconsin Avenue
414.276.7296

Aloft Hotel Milwaukee Downtown

1230 N. Old World Third Street
414.226.0122 | aloftmilwaueedowntown.com

The Astor Hotel

924 E. Juneau Avenue
414.271.4220 | theastorhotel.com



The Brewhouse Inn & Suites

1215 N. 10th Street
414.810.3350 | brewhousesuites.com

Cambria Hotel Milwaukee Downtown

503 N. Plankinton Avenue
414.223.4484 | cambriamilwaukee.com

County Clare Irish Hotel

1234 N. Astor Street
414.272.5273 | countyclare-inn.com

Courtyard Milwaukee Downtown

300 W. Michigan Street
414.291.4122 | marriott.com

DoubleTree by Hilton Milwaukee Downtown

611 W. Wisconsin Avenue
414.273.2950 | doubletreemilwaukee.com

Drury Plaza Hotel

700 N. Water Street
414.224.7864 | druryhotels.com

Fairfield Inn & Suites by Marriott

710 N. Old World Third Street
414.224.8400 | marriott.com/fairfieldinn

Hampton Inn & Suites

176 W. Wisconsin Avenue
414.271.4656 | hilton.com

Hilton Garden Inn Milwaukee Downtown

611 N. Broadway
414.271.6611
hiltongardeninnmilwaueedowntown.com

Homewood Suites by Hilton

500 N. Water Street
414.563.1090 | hilton.com

Hotel Metro

411 E. Mason Street
414.272.1937 | hotelmetro.com

Hyatt Place Milwaukee Downtown

800 W. Juneau Avenue
414.808.3880 | hyatt.com

Hyatt Regency Milwaukee

333 W. Kilbourn Avenue
414.276.1234 | milwaukee.hyatt.com

Journeyman Hotel

310 E. Chicago Street
414.291.3970 | journeymanhotel.com

The Knickerbocker on the Lake

1028 E. Juneau Avenue
414.276.8500 | knickerbockeronthelake.com

Marriott Milwaukee Downtown

323 E. Wisconsin Avenue
414.278.5999 | marriott.com

The Pfister Hotel

424 E. Wisconsin Avenue
414.273.8222 | thepfisterhotel.com



The Plaza Hotel & Apartments

1007 N. Cass Street
414.276.2101 | plazahotelmilwaukee.com

Residence Inn Milwaukee Downtown

648 N. Plankinton Avenue
414.224.7890 | marriott.com/mkeri

Saint Kate - The Arts Hotel

139 E. Kilbourn Avenue
414.276.8686 | saintkatearts.com

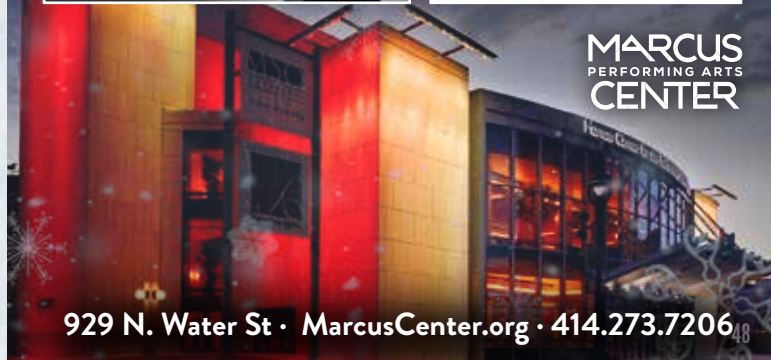
SpringHill Suites by Marriott

744 N. Vel R. Phillips Avenue
414.273.9811 | marriott.com

The Westin Milwaukee

550 N. Van Buren Street
414.224.5224 | westinmilwaukee.com

MAKE HOLIDAY MEMORIES AT THE MARCUS CENTER!



MARCUS
PERFORMING ARTS
CENTER

MKE THE HOP YOUR HOLIDAY CONNECTION!



With charming boutiques, the finest restaurants and more than 500,000 glittering lights, there's no better place to ring in the season than downtown Milwaukee. And getting around has never been easier. Connect to downtown Milwaukee's happenings with free rides aboard The Hop, thanks to Everstream. While hopping around town, get into the spirit of things at the "Me in MKE" display, presented by Mandel Group with support from VISIT Milwaukee, at the Burns Commons stop—The Hop's northern terminus at Ogden and Prospect. So, MKE plans to join us!



OPERATING HOURS OF THE HOP*

PRESENTED BY POTAWATOMI HOTEL & CASINO

Monday through Friday: 5am to 12am

Saturday: 7am to 12am

Sunday: 7am to 10pm

* Vehicles arrive every 15 minutes during peak times and every 20 minutes during off-peak hours and weekends.

FOR ROUTE INFO, VISIT WWW.THEHOPMKE.COM.

The Freshest Trees in Town!

Visit one of our Old World Holiday Tree Lots and choose from a wide selection of Wisconsin's own fresh-cut Fraser firs, evergreen wreaths, garland and Christmas decor, with options well suited to downtown living spaces and business settings.



Ideal Property Management

ideal-landscaping.net • 262-251-3578

Visit our website for more information about Tree Lot locations, special events and tree selections

SAVE \$5

on any purchase from an Ideal Tree Lot with this ad

THREE MILWAUKEE LOCATIONS:
DOWNTOWN, SHOREWOOD
AND WHITEFISH BAY

Ideal's Tree Lots open daily Nov. 23 - Dec. 23 from 10am - 8pm
(excluding Thanksgiving on Nov. 28)





2019

MARCUS PERFORMING ARTS CENTER

The annual Milwaukee Holiday Lights Festival ornament is a one-of-a-kind keepsake. Great gifts for family, friends, co-workers and business associates, each year features an iconic downtown landmark cast in pewter. This year's edition, sculpted by Andrew Schumann, is the 19th in the series and features the Marcus Performing Arts Center, which celebrates its 50th anniversary this year.



2018 - Fiserv Forum



2017 - Northwestern Mutual Tower and Commons



2016 - The Wisconsin Club



2015 - Posner Building



2014 - Iron Block Building



2013 - U.S. Bank Tower



2012 - Milwaukee County Courthouse



2010 - The Cudahy Tower Apartments & Condominiums



2011 - Milwaukee Gas Light Building



2008 - Milwaukee County Historical Society



2009 - Milwaukee Federal Building & U.S. Courthouse



2007 - Northwestern Mutual Corporate Headquarters



2006 - Central Library



2005 - Downtown Trolley



2004 - Milwaukee City Hall



2003 - Cathedral of St. John the Evangelist



2002 - Milwaukee Art Museum



2001 - Pabst Theater

PURCHASE YOUR ANNUAL MILWAUKEE DOWNTOWN TREASURE
shop.milwaukeedowntown.com

The 2019 Marcus Performing Arts Center ornament is available for \$19.95 by visiting shop.milwaukeedowntown.com or completing the order form on the following page. A limited number of past editions are available for \$24.95.

HOLIDAY ORNAMENT

PURCHASE YOUR ANNUAL MILWAUKEE DOWNTOWN TREASURE

The 2019 Marcus Performing Arts Center ornament is available for \$19.95 by visiting shop.milwaueedowntown.com or completing this order form. A limited number of past editions are available for \$24.95.

Save on postage! Ornaments may also be purchased at Milwaukee Downtown, 301 W. Wisconsin Avenue, Suite 300 (414.220.4700), Kloiber Jewelers, 777 E. Wisconsin Avenue (414.276.2457) or Urban Milwaukee, 755 N. Milwaukee Street (414.395.0632). Call ahead for hours of operation.

NAME

BILLING ADDRESS

CITY STATE/ZIP

SHIPPING ADDRESS

CITY STATE/ZIP

DAYTIME PHONE

☐ CHECK ☐ MASTERCARD ☐ VISA EXPIRATION DATE

CREDIT CARD NUMBER

- | | |
|--|-----------|
| <input type="checkbox"/> 2019 - Marcus Performing Arts Center | x \$19.95 |
| <input type="checkbox"/> 2018 - Fiserv Forum | x \$24.95 |
| <input type="checkbox"/> 2017 - Northwestern Mutual Tower and Commons | x \$24.95 |
| <input type="checkbox"/> 2016 - The Wisconsin Club | x \$24.95 |
| <input type="checkbox"/> 2015 - The Posner Building | x \$24.95 |
| <input type="checkbox"/> 2014 - Iron Block Building | x \$24.95 |
| <input type="checkbox"/> 2013 - U.S. Bank Tower | x \$24.95 |
| <input type="checkbox"/> 2012 - Milwaukee County Courthouse | x \$24.95 |
| <input type="checkbox"/> 2011 - Milwaukee Gas Light Building | x \$24.95 |
| <input type="checkbox"/> 2010 - The Cudahy Tower Apartments and Condominiums | x \$24.95 |
| <input type="checkbox"/> 2009 - Milwaukee Federal Building and U.S. Courthouse | x \$24.95 |
| <input type="checkbox"/> 2008 - Milwaukee County Historical Society | x \$24.95 |
| <input type="checkbox"/> 2007 - Northwestern Mutual Corporate Headquarters | x \$24.95 |
| <input type="checkbox"/> 2006 - Central Library | x \$24.95 |
| <input type="checkbox"/> 2005 - Downtown Trolley | x \$24.95 |
| <input type="checkbox"/> 2004 - Milwaukee City Hall | x \$24.95 |
| <input type="checkbox"/> 2003 - Cathedral of St. John the Evangelist | x \$24.95 |
| <input type="checkbox"/> 2002 - Milwaukee Art Museum | x \$24.95 |
| <input type="checkbox"/> 2001 - Pabst Theater | x \$24.95 |

SUBTOTAL

Number of Ornaments (Shipping and Handling for Each Ornament) x \$4.60

TOTAL (WI sales tax is included in the final sales price.)



Make your check or money order payable to Milwaukee Downtown, Inc. Please do not send cash.

Mail to: Milwaukee Downtown Holiday Ornament
301 W. Wisconsin Avenue, Suite 300, Milwaukee, WI 53203

Christmas
with **The Nelsons**

FRIDAY, DECEMBER 20 • 7:30PM
MILLER HIGH LIFE THEATRE
500 W. Kilbourn Avenue (6th & Kilbourn), Milwaukee WI

Buy tickets at the Miller High Life Theatre Box Office or Ticketmaster.com. Convenience fees may apply.

ticketmaster®

WESTTOWN GETS Lit

Thursday, December 5 | 4:30 - 6:30 PM

Come see Westtown in a whole new light. At 5:00 PM, join neighborhood leaders on the corner of Wisconsin Avenue and Old World Third Street and help count down to holiday lights ON! Free cookies, cocoa and s'mores, along with holiday entertainment from carolers and a DJ will add to the merriment.

#WesttownGetsLit



2019 MILWAUKEE HOLIDAY LIGHTS FESTIVAL SPONSORS

PARK SPONSORS



**We Energies
Foundation**

ZILBER
PROPERTY GROUPSM



Ideal
Property
Management

JINGLE BUS SPONSORS

meijer



THE AVENUE

SANTA'S MAILBOX SPONSOR



COCOA WITH THE CLAUSES SPONSOR



MEDIA SPONSORS



journal sentinel



CONTRIBUTING SPONSORS



**Taste
of Home**



Milwaukee Downtown, BID #21
301 W. Wisconsin Avenue, Suite 300
Milwaukee, WI 53203 | 414.220.4700



MILWAUKEE HOLIDAY LIGHTS FESTIVAL
NOVEMBER 21, 2019 – JANUARY 1, 2020
WWW.MILWAUKEEHOLIDAYLIGHTS.COM
#MKEHOLIDAYLIGHTS