

Milwaukee Holiday Lights Festival
presented by Johnson Financial Group



DASHING THROUGH THE GLOW

[MILWAUKEEHOLIDAYLIGHTS.COM](https://milwaukeeholidaylights.com)



MILWAUKEE
HOLIDAY LIGHTS
FESTIVAL

NOV 18, 2021 THRU
JAN 1, 2022

DOWNTOWN MILWAUKEE

PRESENTED BY:



JOHNSON
FINANCIAL GROUP*



MILWAUKEE HOLIDAY LIGHTS FESTIVAL

Milwaukee Holiday Lights Festival



PRESENTED BY JOHNSON FINANCIAL GROUP
November 18, 2021 – January 1, 2022

Coordinated by Milwaukee Downtown, BID #21, the Milwaukee Holiday Lights Festival is a Midwest tradition. Illuminated by more than a half million lights, take a stroll through the magical scenes in Cathedral Square, Zeidler Union Square and Pere Marquette Park. They're a sparkling backdrop for all your holiday traditions. Or hop in your car and take a self-guided Jingle Bus audio tour of the lights and sights, free on the iHeartRadio app.

While taking in the festive panorama, check out what's stirring indoors. Whether it's a live performance, dinner, shopping or cheering on the home team, there are countless ways to extend your visit. Use this handy guide to build lasting memories with family and friends.

Happy Holidays, Milwaukee!



Table of Contents

Fest Info	2
Kickoff Broadcast	4
Sights To See	6
Holiday Happenings	8
Theater & Comedy	15
Music	22
2021 Holiday Ornament	27
Art & History	31
Family Learning	34
Sports	36
New Year's Eve/Day	39
Dining & Nightlife	40
Shopping	48
Hotels	52



Self-Guided Jingle Bus Tours on the iHeartRadio App



Get acquainted with Downtown's lights and sights via a self-guided audio tour available on the iHeartRadio app. Hop aboard the free tour by listening to five episodes available in both English and Spanish. Just type "MKE Jingle Bus Tour" in the iHeartRadio app or anywhere you listen to your favorite podcasts, and follow along by car or on foot.



Kickoff Broadcast

Kickoff Broadcast



Milwaukee Holiday Lights Festival Kickoff Broadcast

Kick-start your holidays by tuning into the Milwaukee Holiday Lights Festival Kickoff on Thursday, November 18 at 6:30 p.m. on WISN 12. Packed with local talent and a spectacular finale, you won't want to miss this sampling of Downtown's holiday shows.



Wisconsin Avenue's Stunning Chandeliers

Drone Displays



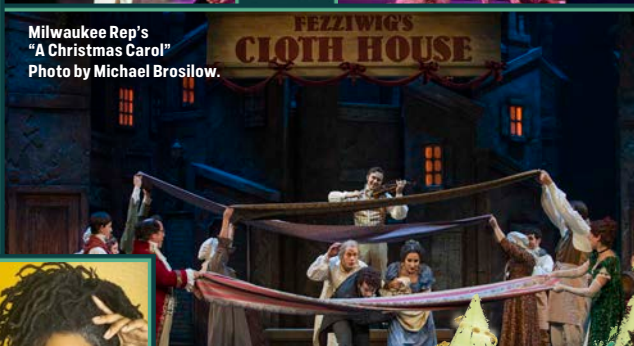
Jenny Thiel



Milwaukee Ballet's "The Nutcracker" Photo by Mark Frohna.



Milwaukee Rep's "A Christmas Carol" Photo by Michael Brosilow.



Anita's Dance Center



Donna Woodall



Jingle Joy Bags

While exploring Downtown's lights and sights, enjoy treats curated by Milwaukee Food & City Tours on select nights in December. Jingle Joy Bags are \$15 and can be pre-ordered at www.milwaukeefoodtours.com or purchased day of, while supplies last. The Jingle Joy drive-thru will operate from 5:30 p.m. to 8:30 p.m., Fridays and Saturdays, December 3 - 18, at Zeidler Union Square. Cash and credit will be accepted.

Milwaukee
FOOD & CITY TOURS



Sights To See

"Home Is Where The Hearth Is powered by We Energies" at Zeidler Union Square

This interactive park is a favorite among families. Take a selfie in the oversized chair, stand before the flickering fireplace or snap a photo in the Season's Greetings frame. There's so much to see and do, including purchasing a Jingle Joy Bag on select nights in December.



"Community Spirit Park" at Cathedral Square Park

Over 100 evergreens have sprung on the square! Wind your way through the forest of trees and pay close attention to each tree's décor. More than 70 area schools and businesses are sharing their wish for the season with handmade ornaments and garlands. Plus, check out the park's Singing Tree, which blinks to singing, music and clapping in real time.



"HiBEARnation Station" at Pere Marquette Park

Swing into the holidays with this rockin' display. Animated bear sculptures are banding together with a keyboard, horn, guitar, drums and an accordion to create sounds of the season. Yule be beaming from ear to ear!



Wisconsin Avenue – 6th Street to Prospect Avenue

Downtown Milwaukee's main street is an elegant display of cascading chandeliers accented by ornamental sculptures on harp lamps. Stroll or cruise the Avenue and take in the decorated storefronts and iconic buildings basking in the glow of the season.



Sights To See



Santa's Mailbox

Fast track letters to the North Pole! Drop your child's wish list into Santa's Mailbox at Cathedral Square Park, November 18 – December 12, and receive a personalized reply. Holiday spirit delivers the letters to Santa – no postage required! Just remember to include a return address. Letters must be received by December 12 to receive a personalized reply.



COVID-19 Vaccine, Testing & Mask Policies

As of June 1, 2021, the City of Milwaukee relaxed most COVID-19 restrictions and ended its mask mandate. Though the mask mandate is lifted, local businesses may set their own mask requirements. In addition, please note that many venues will also require proof of vaccination for all patrons age 12 and above or a negative COVID-19 test taken 72 hours or less from your scheduled show time. Guests under 12 years of age may not be required to provide proof of a negative COVID-19 test, but may be required to wear masks. To ensure you have the most current information, please check with the venue or business for additional guidelines and requirements specific to the event you are attending.



MILWAUKEE
HOLIDAY LIGHTS
FESTIVAL

Holiday Happenings

Holiday Happenings

Milwaukee Holiday Lights Festival Kickoff Broadcast

PRESENTED BY STEIN'S GARDEN & HOME

Thu, November 18 | 6:30pm
WISN 12

414.220.4700 | milwaukeeholidaylights.com

Tune into WISN 12 and get into the holiday spirit with an all-new variety show. Packed with local talent and a spectacular finale, you won't want to miss this sampling of Downtown's holiday shows!



Santa's Mailbox

PRESENTED BY EDUCATORS CREDIT UNION,
SERVING OLDER ADULTS & NATIONAL
ASSOCIATION OF LETTER CARRIERS PIONEER
BRANCH 2

November 18 - December 12
Cathedral Square Park

414.220.4700 | milwaukeeholidaylights.com

Drop a child's letter to Santa into Santa's Mailbox and receive a personalized reply. Holiday spirit delivers the letters to Santa - no postage required...just include a return address!



Self-Guided Jingle Bus Audio Tours - English & Spanish

November 18 - January 1
Downtown Milwaukee

414.220.4700 | milwaukeeholidaylights.com

Get acquainted with Downtown's lights and sights via a self-guided audio tour available on the iHeartRadio app. Hop aboard the free tour by listening to five episodes available in both English and Spanish. Just type "MKE Jingle Bus Tour" in the iHeartRadio app, and follow along by car or on foot.

City Christmas Tree

Beginning November 18
Corner of Market & Wells Streets

414.286.2489 | city.milwaukee.gov
Gaze upon the City's beautifully lit tree and grab a family photo.



FEZtival of Trees

November 19 - 27
Tripoli Shrine
3000 W. Wisconsin Avenue
414.933.4700

tripolishrine.com/festival-of-trees
Check out this magical Christmas forest featuring 70+ fully decorated Christmas trees donated by area businesses and organizations, which will be raffled off for the season. Look for the Milwaukee Holiday Lights Festival tree, "MKE It FEZtival," co-sponsored by Milwaukee Downtown, BID #21 and Retailworks Inc.



Holiday Show at Mitchell Park Domes

November 20 - January 3
Mitchell Park Domes

414.257.5608 | milwaueedomes.org

Enjoy the festive atmosphere among vivid poinsettias and decked-out holiday trees.

Holiday Photos at the Historical Society

Sat, November 20 | 9:30am to 2:30pm
Milwaukee County Historical Society
414.273.8288 | milwaueehistory.net

Take a festive family photo against the beautiful backdrop of the Milwaukee County Historical Society. Each 20-minute mini session is \$250 and includes ten edited digital photos. Half of the proceeds from each session will go to support the venue. Space is limited. Book today!

Cream City Creatives

Sun, November 21 | 10am to 3pm
Turner Hall Ballroom

414.286.3663 | creamcitycreatives.com
An annual craft fair highlighting Milwaukee's diverse artisans and makers.



Ideal Property Management Tree Lot

November 23 - December 24
10am to 8pm

Pere Marquette Park
262.251.3578 | ideal-landscaping.net
An old-fashioned tree lot featuring a wide selection of fresh Wisconsin trees, handmade wreaths and Christmas décor. Don't miss an ice-carving demonstration on Dec. 11 from 11 a.m. to 3 p.m. and a live reindeer visit on Dec. 12 from 1:15 p.m. to 4 p.m.



Holiday Happenings

Milwaukee Turkey Trot

Thu, November 25 | 7am

Veterans Park

224.757.5425 | wisconsinruns.com

Work up a turkey-day appetite with a 5K or 8K run along Milwaukee's lakefront.

Thanksgiving Bountiful Brunch

Thu, November 25 | 11am to 5pm

The Pfister Hotel - Grand Ballroom

414.935.5950 | thepfisterhotel.com

The perfect destination for your family's cherished Thanksgiving. There's so much to be thankful for, from appetizers and entrees to side dishes and desserts - plus all the traditional trimmings.

Thanksgiving at Mason Street Grill

Thu, November 25 | 1pm to 7pm

Mason Street Grill

414.298.3131 | masonstreetgrill.com

Enjoy an all-American grill for this quintessential holiday. Wood-grilled steaks, seafood and a special Thanksgiving prix fixe menu. Private dining rooms are also available for your family gathering.



The Pfister's Annual Tree Lighting Ceremony

Fri, November 26 | 5pm to 6:30pm

The Pfister Hotel

414.273.8222 | thepfisterhotel.com

Watch the expressions on young and old alike as Santa officially lights The Pfister holiday tree at 5:30 p.m. Sip warm drinks and nibble on a holiday treat. Nonperishables will be collected for Hunger Task Force.

Letters To Santa

November 26 - December 19

The Pfister Hotel

414.273.8222 | thepfisterhotel.com

Children can write a letter to Santa and drop it off at The Pfister Hotel in the magical North Pole Mailbox. Each child will receive a personalized note from Santa himself, plus a free cookie from the front desk with their letter drop off.



Milwaukee Makers Market

Sat, November 27 | 10am to 4pm

Sun, December 19 | 10am to 4pm

Discovery World

414.765.9966 | discoveryworld.org

Meet Milwaukee jewelry makers, artists, designers and other skilled artisans. Shop one-of-a-kind, locally-made products including ceramics, clothing, leather goods, candles and more. Admission to the market is free.

Small Business Saturday

Sat, November 27 | 10am to 6pm

Historic Third Ward

414.273.1173 | historichirdward.org

Support locally-owned businesses as Milwaukee retailers offer incentives and specials during this one-day sale.



Holiday Happenings



Light the Hoan

Ongoing

The Daniel M. Hoan Memorial Bridge

lightthehoan.com

Make holiday memories with a brilliant light show. View the dazzling schedule online.



Photo by Front Room Studios.

Annual BMO Harris Holiday Display

November 29 - January 3

BMO Harris Bank

790 N. Water Street

414.765.7500 | bmo Harris.com

Check out the fun, colorful window display stretching from Mason to Wells on Water Street.



Slice of Ice

December - Mid-March

(weather permitting)

Red Arrow Park

414.289.8791 | countyparks.com

A slice of winter fun in the heart of downtown! Bring your own ice skates and skate for free or rent a pair at the warming house. Call ahead to confirm season opening.



Christmas in the Ward

Fri, December 3 | 5:30pm to 8:30pm

Catalano Square

414.273.1173 | historichirdward.org

Take a selfie in front of the beautifully lit Christmas tree and enjoy live holiday entertainment, as well as shopping and dining promotions throughout the season.

Holiday Happenings

Holiday Happenings

Jingle Joy Bag Drive-Thru

Fri & Sat, December 3 - 18

5:30pm to 8:30pm

Zeidler Union Square

414.255.0534 | milwaukeefoodtours.com

While taking in Downtown's lights and sights, pick up a Jingle Joy Bag. Curated by Milwaukee Food & City Tours, Jingle Joy Bags are grab-and-go treat packs featuring goodies from local businesses. Plus, they include a few surprises for the kiddos too. Each treat bag is \$15. Bags can be pre-ordered or purchased day-of via cash or credit card, while supplies last.

Westown Tree Presented by 310W

December

310W - 310 W. Wisconsin Avenue

414.276.6696 | westown.org

Westown gets lit with the third annual neighborhood tree on the 310W plaza, at the corner of Wisconsin Avenue and Old World Third Street.



Santa Hustle 5K Milwaukee Run/Walk

Sun, December 5 | 8:30am

Veterans Park

847.829.4536 | santahustle.com

Be part of one of the largest, growing races as thousands of Santas hit the streets.

Breakfast with Santa at The Pfister

Sun, December 5, 12 & 19

8am & 11:30am

The Pfister Hotel

414.935.5950 | thepfisterhotel.com

Join Santa and his elves for a festive feast, a gift for each child, crafts, letters to Santa, and countless memories. Smaller seating groups will ensure that everyone has an exceptional experience.

Hover Craft: Handmade Holiday Shopping Extravaganza

Sun, December 5 | 12pm to 6pm

Pritzlaff Building

hovercraftmke.com

A handmade holiday showcase featuring 100+ vendors. Reserve your timed ticket.



Santa's Christmas Cavalcade

Fri, December 10 & 17

Departs at 5:15pm

Downtown Milwaukee

414.220.4700 | milwaukeeholidaylights.com

See Santa and Mrs. Claus on this festive route riding atop a vintage fire truck. Sarah Fierek will also be on board singing jazzy holiday tunes. Route departs from the Milwaukee Public Market and travels throughout downtown. See page 3 for details.



Cocoa with the Clauses

PRESENTED BY
MADISON MEDICAL AFFILIATES

Sat, December 11 | 11am to 2pm

414.220.4700 | milwaukeeholidaylights.com

Straight from the North Pole, Santa and Mrs. Claus return for this annual cocoa klatch. The free outdoor event is a chance for kids to share their wish lists, and for moms and dads to snap a keepsake photo. Just remember to bring your camera! Elves and other holiday characters will also be there.

Santa Camp Pop's Up

December 17 & 18 | 5pm to 10pm

Turners' Alley

1029 N. Old World 3rd Street

414.220.4700 | milwaukeeholidaylights.com

Experience this one-of-a-kind holiday pop-up, featuring a special Holiday Lights Festival ice bar by Art Below Zero, festive drinks from Deer Camp, and gifts from Pop's MarketPlace.

Christmas Gift Boxes

Milwaukee Food & City Tours

414.255.0534 | milwaukeefoodtours.com

This limited-edition series of holiday gift boxes features items from local small businesses and food producers. Custom gift boxes and corporate gift boxes are also available.

Christmas Around Milwaukee Bakery Tour

Fri, Sat & Sun in December

Various Locations

414.255.0534 | milwaukeefoodtours.com

Travel around the world and back while never leaving Milwaukee. Guests on the nice list (and even the naughty list) will be treated to signature cookies, candies and pastries from a collection of six to eight of Santa's favorite bakeries in Milwaukee.



Christmas Lights & Desserts Bus Tour

Fri, Sat & Sun in December

Downtown Milwaukee

414.255.0534 | milwaukeefoodtours.com

Led by a singing tour guide, this Santa-approved tour is the perfect mix of history, Milwaukee Christmas traditions, tasty treats and light-hearted holiday spirit. This tour features walking stops in Cathedral Square and Zeidler Union Square, plus viewing opportunities in areas such as Red Arrow Park, Pere Marquette Park and the Historic Third Ward.

Holiday Happenings

Theater & Comedy



Christmas Celebration Brunch at The Pfister

Sat, December 25 | 11am to 3pm
The Pfister Hotel

414.935.5950 | thepfisterhotel.com
A Pfister Christmas begins with a complimentary mimosa or Bloody Mary in an elegantly decorated ballroom. Following cocktails is a spectacular buffet featuring a delicious assortment of fresh seafood, Wisconsin's finest cheeses, carved meats, made-to-order omelets, a variety of mouth-watering entrees and desserts loved by big and small elves alike.



A Mason Street Grill Christmas

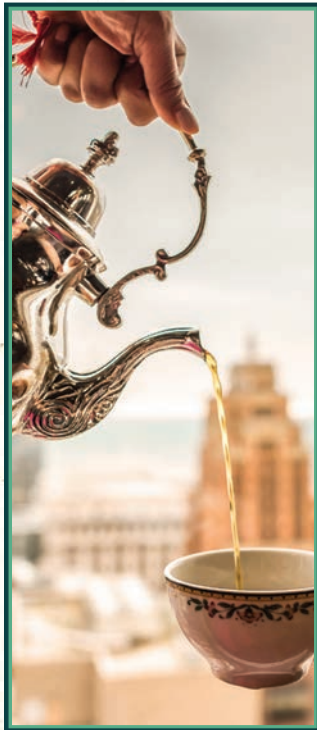
Sat, December 25 | 1pm to 7pm
Mason Street Grill

414.298.3131 | masonstreetgrill.com
Experience classic American favorites and enjoy delicious Christmas specials in addition to the regular menu. Private dining rooms are also available for your family gathering.

Afternoon Tea at The Pfister

Sat & Sun, Now through May 8
The Pfister Hotel - BLU

414.935.5950 | thepfisterhotel.com
Enjoy a tableside tea blending, presented in all-silver service by a Pfister Tea Butler. The afternoon is complete with traditional sandwiches and pastries. Reservations required.



Pilobolus

Thu, November 18 | 7:30pm
Marcus Performing Arts Center - Uihlein Hall

414.273.7206 | marcuscenter.org

An acclaimed theatrical dance company that continues to test the limits of human physicality while exploring the beauty and power of connected bodies.

"A Charlie Brown Christmas"

November 20 - December 26
Marcus Performing Arts Center - Todd Wehr Theater

414.267.2961 | firststage.org

Join Charlie Brown, Snoopy, and the rest of the Peanuts gang as they learn the true meaning of Christmas.



"The Thanksgiving Play"

November 19 - December 19
Broadway Theatre Center - Studio Theatre

414.291.7800 | milwaukeechambertheatre.org

A team of terminally woke teaching artists' good intentions collide with absurd assumptions in this blistering satire.

Jim Jefferies

Fri, November 19 | 7pm
The Riverside Theater

414.286.3663 | pabsttheatergroup.com

Join internationally renowned comedian Jim Jefferies during The Moist Tour at the Riverside Theater.

"Little Shop of Horrors"

November 19 - January 2
Broadway Theatre Center Cabot Theatre

414.291.7800 | skylightmusictheatre.org

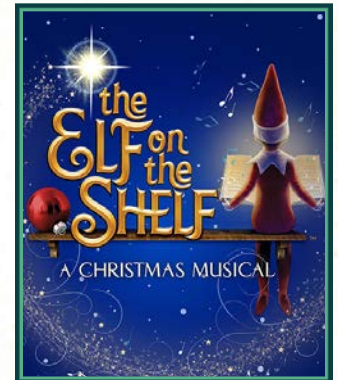
A worldwide phenomenon, devouring the hearts of theatregoers for over 30 years, this disarmingly funny and quirky love story returns.

"The Elf on the Shelf: A Christmas Musical"

Sun, November 21 | 2pm & 6pm
The Riverside Theater

414.286.3663 | pabsttheatergroup.com

A thrilling spectacle of music and dance that transports audiences to the North Pole to glimpse the magical lives of Santa's Scout Elves. Featuring an original story and score, dazzling sets and costumes, and heartfelt moments.





"One Funny Mother"

Dena Blizzard

Sun, November 21 | 8pm
Turner Hall Ballroom
414.286.3663 | pabsttheatergroup.com
Join comedian Dena Blizzard, former Miss New Jersey, and married mother of three on her hilarious journey through the trials and tribulations of motherhood and marriage.

"Jesus Christ Superstar"

November 23 - 28
Marcus Performing Arts Center - Uihlein Hall
414.273.7206 | marcuscenter.org
This iconic musical phenomenon with a world-wide fan base celebrates its 50th anniversary with a new mesmerizing production.

"Red Herring"

November 24 - December 19
Next Act Theatre
414.278.0765 | nextact.org
Sex! Murder! Commies! It's 1952: America's gonna blow the H-bomb, the voters like Ike and everyone loves Lucy on Monday nights. Hang onto your fedora: the cops are quick, the jokes are rapid-fire... and the spies are just plain hot.

Jim Gaffigan

November 24, 26 & 27 | 7pm
The Riverside Theater
414.286.3663 | pabsttheatergroup.com
Hear Jim Gaffigan's hilarious take on relationships, kids, food and life.

"A Christmas Carol"

November 30 - December 24
The Pabst Theater
414.224.9490 | milwaukeeep.com
Make up for lost time with family and friends this holiday season as The Rep's full ensemble production joyfully returns to the historic Pabst Theater. Enchanting music, dance, costumes, scenery and special effects will once again fill the theater to tell this timeless tale of love, hope and redemption.



Second City: It's A Wild, Wacky, Wonderful Life

December 2 - 4
Marcus Performing Arts Center - Wilson Theater
414.273.7206 | marcuscenter.org
While the weather outside could be frightful, the laughter inside is most delightful as comedy's best and brightest roast the chestnuts out of all the things we lovingly loathe about the holiday season. This performance contains adult or mature content.



"The Laramie Project"

December 3 - 12
Milwaukee Youth Arts Center
325 W. Walnut Street
414.267.2961 | firststage.org
In October 1998, 21-year-old Matthew Shepard, an openly gay college student, was brutally beaten and left to die on the plains outside Laramie, Wyoming. "The Laramie Project" is a breathtaking collage that explores the depths to which humanity can sink and the heights of compassion of which we are capable.



Chelsea Handler

Sat, December 4 | 7pm
Miller High Life Theatre
414.908.6000 | millerhighlifetheatre.com
Join comedian, television host, best-selling author and advocate whose humor and candor have established her as one of the most celebrated voices in entertainment and pop culture.



Photo by Michael Brosilow.



Photo by Jenny Plevin.

"Steel Magnolias"

Now through December 5

The Rep - Quadracci Powerhouse
414.224.9490 | milwaukeeep.com

Through clouds of hairspray and over the buzz of blow dryers, six southern spitfires gather each week to gossip and support each other through thick and thin. But those bonds are tested when the ladies face a life-changing event.

Scribble Showdown

Mon, December 6 | 8pm

Turner Hall Ballroom

414.286.3663 | pabsttheatergroup.com

Everyone's favorite improvisational animation game show is back and it's bigger and better than ever.

A Magical Cirque Christmas

Wed, December 8 | 7:30pm

The Riverside Theater

414.286.3663 | pabsttheatergroup.com

Experience the enchantment of Christmas as magical hostess Lucy Darling takes you through an evening of dazzling performers and breathtaking cirque artists, accompanied by your favorite holiday music performed live.

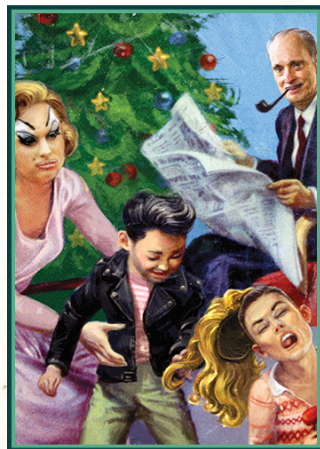


"Black Nativity"

December 9 - 12

Marcus Performing Arts Center - Wilson Theater at Vogel Hall
414.273.7206 | marcuscenter.org

A joyous holiday musical, "Black Nativity" is a testament to Langston Hughes' timeless work, telling the story of the Nativity through a combination of scripture, poetry, dance and song from the African-American perspective. This year's production features a fresh post-pandemic take on Hughes' song play.



A John Waters Christmas... It's A Yuletide Massacre

Thu, December 9 | 8pm

Turner Hall Ballroom

414.286.3663 | pabsttheatergroup.com

John Waters, a "gutter" filmmaker, tawdry stand-up comedian and author of many appalling books, brings a whole new bag of holiday filth for bad little boys and girls everywhere.

"The Nutcracker"

December 10 - 26

Marcus Performing Arts Center - Uihlein Hall
414.902.2103 | milwaukeeballet.org

Shake off the winter chill and gather again with friends and family for Milwaukee's magical holiday tradition. More than 200 dancers take the stage in this holiday favorite featuring elaborate sets, lavish period costumes, special effects and magic tricks!



Photo by Nathaniel Davauer.

The Price is Right™ Live

Sat, December 11 | 2pm & 8pm

The Riverside Theater

414.286.3663 | pabsttheatergroup.com

Everyone's favorite game show is on its way to you, along with the chance to win a share of the more than \$12 million in cash and fabulous prizes.



Suicide is a Drag

Wed, December 15 | 7pm

Turner Hall Ballroom

414.286.3663 | pabsttheatergroup.com

A drag show benefiting the American Foundation for Suicide Prevention - Wisconsin.

Potted Potter

Wed, December 21 - January 2

Marcus Performing Arts Center - Wilson Theater at Vogel Hall
414.273.7206 | marcuscenter.org

All seven Harry Potter books in 70 hilarious minutes.



"Dad's Season Tickets"

Now through January 2

The Rep - Stackner Cabaret

414.224.9490 | milwaukeeep.com

A new musical comedy for football fanatics and the people who love them. Who will inherit Frank's treasured season tickets at Lambeau Field? The Kosinski sisters employ every trick in the playbook, on the way to relearning that family isn't everything; it's the only thing.

Shen Yun 2021

December 31 - January 2

Marcus Performing Arts Center - Uihlein Hall
414.273.7206 | marcuscenter.org

Experience a lost culture through the incredible art of classical Chinese dance, and see legends come to life.



HOPPY HOLIDAYS MILWAUKEE!

THE HOP

is a fun and safe way to experience
the holidays in Milwaukee. Start
exploring the route today at
thehopmke.com

THE HOP
— STREETCAR —

PRESENTED BY
POTAWATOMI
HOTEL & CASINO

COCOA WITH THE CLAUSES

Sat, December 11 | 11am to 2pm
Cathedral Square Park



Make a date with Christmas'
most darling couple. Enjoy
cookies and cocoa compliments
of Taste of Home and the chance
to capture a keepsake photo
with the jolly old elf himself.
Just remember the camera!



MADISON MEDICAL
MEQUON • MILWAUKEE

milwaukeeholidaylights.com



THE HOT LIST



Looking for ways to fill your social calendar?
Join the Downtown Hotlist and receive
semimonthly emails with a curated list of virtual
and in-person events. As a Milwaukee Downtown
insider, you'll get the scoop on exhibitions,
shows and all sorts of other hot happenings.

SIGN UP TODAY!

mke
DOWNTOWN

Chvrches

Thu, November 18 | 8pm
The Riverside Theater
 414.286.3663 | pabsttheatergroup.com
 Enjoy a night with indie pop band Chvrches and special guest Donna Missal.

Ruston Kelly

Fri, November 19 | 8pm
Turner Hall Ballroom
 414.286.3663 | pabsttheatergroup.com
 Nashville-based singer-songwriter Ruston Kelly recounts his journey to sobriety in his latest album.



Bolcom Violin Concerto

November 19 – 20
Bradley Symphony Center
 414.291.7605 | mso.org
 Haydn's Symphony No. 96, one of his famed London symphonies, earned its nickname "Miracle" when a chandelier fell during its premiere and killed no one. This program also includes Prokofiev's playful Classical Symphony, composed on an idyllic farm against the backdrop of the Russian Revolution; Schoenberg's moody "Accompaniment to a Film Scene;" and a jazz-infused violin concerto by Pulitzer Prize-winning composer William Bolcom.

'90s Kickback Concert

Sat, November 20 | 8pm
Miller High Life Theatre
 414.908.6000 | millerhighlifetheatre.com
 A preeminent R&B concert featuring Next, Ginuwine, Case, H-Town, Brownstone, Jade and Shai.

Saturday Classics Concert: Mendelssohn and Mozart

Sat, November 20 | 2pm
Bradley Symphony Center
 414.291.7605 | festivalcitysymphony.org
 Festival City Symphony Principal Flute Emma Koi performs Mozart's timeless First Flute Concerto. The concert will also feature Ralph Vaughan Williams' Five Variants of "Dives and Lazarus" and Mendelssohn's "Scottish" Symphony.

Thanksgiving: Circle Unbroken

Sun, November 21 | 5pm
Cathedral of St. John the Evangelist
 414.229.4308 | presentmusic.org
 Thanksgiving returns with immense gratitude; a celebration of community featuring collaborations with longtime choral and Native American drum group partners, a world premiere by Diné artist Raven Chacon, and a revisiting of Present Music's greatest commissions.



Star Wars: Return of The Jedi

November 26 – 28
Bradley Symphony Center
 414.291.7605 | mso.org
 The MSO presents 1983's Return of the Jedi, the third and final installment of the original Star Wars trilogy. Experience the complete movie as the Orchestra performs John Williams' landmark score live-to-film.

DaBaby & Friends

Sat, November 27 | 8pm
Miller High Life Theatre
 414.908.6000 | millerhighlifetheatre.com
 Rapper DaBaby builds upon the buzz of his early work with 2019's "KIRK" and 2020's "Blame It On Baby," which featured the chart-topping single "Rockstar" with Roddy Ricch.

Grayscale

Mon, November 29 | 7pm
Turner Hall Ballroom
 414.286.3663 | pabsttheatergroup.com
 An alternative rock band with strong hooks, relatable lyrics and catchy riffs.

Béla Flech My Bluegrass Heart

Mon, November 29 | 7:30pm
The Riverside Theater
 414.286.3663 | pabsttheatergroup.com
 Flech returns to the stage with his first bluegrass tour in 24 years.

Holiday Pajama Jamboree

Wed, December 1 | 7pm
Marcus Performing Arts Center
 262.853.6085 | festivalcitysymphony.org
 Enjoy traditional holiday favorites concluding with Leroy Anderson's beloved "A Christmas Festival." Dress is casual. Pajamas, teddy bears, and blankets are welcome! Admission is free. Attendees are encouraged to bring a nonperishable food donation for Milwaukee's Hunger Task Force.

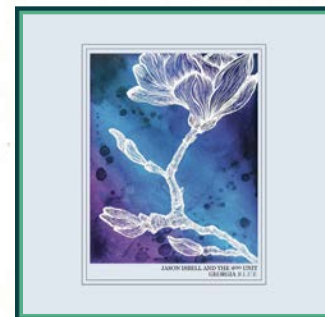


Police Deranged For Orchestra

Thu, December 2 | 7:30pm
Bradley Symphony Center
 414.291.7605 | mso.org
 A high-energy orchestral evening celebrating the work of legendary rock star and composer Stewart Copeland. This concert will be an evening bursting with The Police's biggest hits and features Copeland on drums, guest vocalists and guitar with the MSO.

City and Colour

Thu, December 2 | 8pm
Turner Hall Ballroom
 414.286.3663 | pabsttheatergroup.com
 Don't miss indie band City and Colour as they make their return to Milwaukee.



Jason Isbell and The 400 Unit

Thu, December 2 | 8pm
The Riverside Theater
 414.286.3663 | pabsttheatergroup.com
 Whether exploring relationships, parenthood, alcoholism, or any of the deeply personal and beautiful stuff in between, Jason Isbell offers his fans a performance at the height of his powers and a band fully charged with creativity and confidence.

James Taylor with special guest Jackson Browne

Thu, December 2 | 7:30pm
Fiserv Forum
 414.227.0511 | fiservforum.com
 Legendary singer-songwriter James Taylor & His All-Star Band visit Milwaukee with special guest Rock & Roll Hall of Famer Jackson Browne.

Harry Potter and the Order of The Phoenix

December 3 - 5

The Riverside Theater

414.286.3663 | pabsttheatergroup.com
Rediscover the magic of Harry Potter and the Order of The Phoenix™ while the Milwaukee Symphony Orchestra performs Nicholas Hooper's unforgettable score and Harry Potter™ soars across the big screen in high-definition.

José Feliciano Feliz Navidad

Sat, December 4 | 8pm

Marcus Performing Arts Center - Uihlein Hall

414.273.7206 | marcuscenter.org
"Feliz Navidad" singer-songwriter José Feliciano brings a fun holiday show for the whole family.

Dawes

Sun, December 5 | 8pm

Turner Hall Ballroom

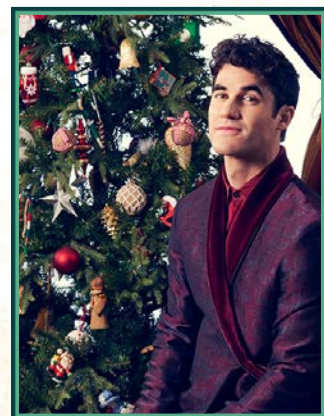
414.286.3663 | pabsttheatergroup.com
Enjoy music by folk-rock band Dawes as they make their return to Turner Hall Ballroom.

A Very Darren Crissmas Tour

Tue, December 7 | 8pm

The Riverside Theater

414.286.3663 | pabsttheatergroup.com
Singer-songwriter Darren Criss debuts his first-ever holiday album, a collection of wildly eclectic tunes.



Snail Mail

Tue, December 7 | 8pm

Turner Hall Ballroom

414.286.3663 | pabsttheatergroup.com
Enjoy a night with indie rock artist Snail Mail on their follow-up tour to their new album Valentine.



Chris Isaak

Wed, December 8 | 8pm

Miller High Life Theatre

414.908.6000 | millerhighlifetheatre.com
Join Grammy-nominated singer and actor Chris Isaak on his special holiday tour.

Chanticleer

Thu, December 9 | 7:30pm

Bradley Symphony Center

414.291.7605 | mso.org
A Grammy Award®-winning vocal ensemble featuring a seamless blend of 12 male voices ranging from countertenor to bass.

Christmas in the Basilica

December 10 - 12

Basilica of St. Josaphat

414.481.8801 | belcanto.org
Enjoy traditional Christmas carols performed by chorus, organ and brass.

Holiday Pops

December 10 - 12

Bradley Symphony Center

414.291.7605 | mso.org
Bring the whole family to Milwaukee's musical holiday tradition! The Milwaukee Symphony Chorus joins the Orchestra for a musical jubilee of your favorite carols, classics, and sing-alongs.

Mannheim Steamroller

Sun, December 12 | 3pm

The Riverside Theater

414.286.3663 | pabsttheatergroup.com
Don't miss the 35th anniversary show of Mannheim Steamroller!

Handel's Messiah

December 16 - December 19

Bradley Symphony Center

414.291.7605 | mso.org
Handel's Messiah, one of the most revered oratorios of all time, has become a musical centerpiece for the holidays. Music Director Ken-David Masur conducts this dramatic masterpiece as the Bradley Symphony Center fills with Handel's sacred sounds, including Messiah's rousing and immortal "Hallelujah" chorus.



Photo by Jonathan Kirn.

Houndmouth

Thu, December 16 | 8pm

Turner Hall Ballroom

414.286.3663 | pabsttheatergroup.com
From their humble start, genre-defining hits, and experimentation, Houndmouth has and continues to make their impact felt with their unique take on storytelling through music.

Canadian Brass Holiday

Fri, December 17 | 7:30pm

Bradley Symphony Center

414.291.7605 | mso.org
Canadian Brass performs your favorite festive tunes in their entertaining and spontaneous style.

Luminare

Fri, December 17 | 8pm

Marcus Performing Arts Center - Wilson Theater at Vogel Hall

414.273.7206 | marcuscenter.org
A new and exciting musical experience that will take audiences on an unforgettable journey through the holiday season and beyond. Created by former Mannheim Steamroller member John Blasucci.

A Motown Christmas

Fri, December 17 | 8pm

The Riverside Theater

414.286.3663 | pabsttheatergroup.com
Enjoy a Motown Christmas show featuring the music and past and present members of The Temptations, The Miracles, and The Contours.

Myspace Emo Prom

Fri, December 17 | 8pm

Turner Hall Ballroom

414.286.3663 | pabsttheatergroup.com
Remember 2009? The time of Myspace, Hot Topic and the battle of Emo vs. Scene kids. Get ready for a reunion party taking you back to the era of bleeding hearts, sensitivity, and introverted teenage angst.



Josh Caterer Trio Holiday Soiree

Sat, December 18 | 8pm

The Back Room @ Collectivo

2211 N. Prospect Avenue
414.286.3663 | pabsttheatergroup.com
Enjoy a holiday set list in this cozy and up-close space.



Horseshoes & Hand Grenades

Fri, December 31 | 8pm
The Pabst Theater
 414.286.3663 | pabsttheatergroup.com
 For the first time since NYE 2018, Horseshoes & Hand Grenades returns to the historic Pabst Theater for their traditional hootenanny.



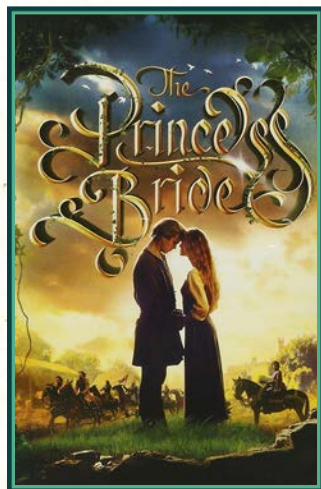
Martina McBride Christmas

Sun, December 19 | 7pm
The Riverside Theater
 414.286.3663 | pabsttheatergroup.com
 Experience the "Joy of Christmas" on McBride's latest tour.



The Princess Bride

January 1 - 2
Bradley Symphony Center
 414.291.7605 | mso.org
 Relive all of the magic, the monsters, and the miracles as the Milwaukee Symphony performs the music of The Princess Bride while the classic PG-rated film plays above the stage.



Trans-Siberian Orchestra

Sun, December 26 | 3pm & 7:30pm
Fiserv Forum
 414.227.0511 | fiservforum.com
 Multi-platinum, progressive rock group TSO celebrates the 25th anniversary of the group's landmark album "Christmas Eve and Other Stories."

The BoDeans and The Gufs

Wed, December 29 | 7pm
The Pabst Theater
 414.286.3663 | pabsttheatergroup.com
 Wisconsin favorites come together for a co-headlining show.



2021 WARNER MARQUEE

The annual Milwaukee Holiday Lights Festival ornament is a one-of-a-kind keepsake. Great gifts for family, friends, co-workers and business associates, each year features an iconic downtown landmark cast in pewter. This year's edition, sculpted by Andrew Schumann, is 21st in the series and features the Warner Marquee at the newly-completed Bradley Symphony Center, home of the Milwaukee Symphony Orchestra.

- | | |
|--|--|
| 2020 Hoan Bridge | 2009 Milwaukee Federal Building & U.S. Courthouse |
| 2019 Marcus Performing Arts Center | 2008 Milwaukee County Historical Society |
| 2018 Fiserv Forum | 2007 Northwestern Mutual Corporate Headquarters |
| 2017 Northwestern Mutual Tower and Commons | 2006 Central Library |
| 2016 The Wisconsin Club | 2005 Downtown Trolley |
| 2015 Posner Building | 2004 Milwaukee City Hall |
| 2014 Iron Block Building | 2003 Cathedral of St. John the Evangelist |
| 2013 U.S. Bank Tower | 2002 Milwaukee Art Museum |
| 2012 Milwaukee County Courthouse | 2001 Pabst Theater |
| 2011 Milwaukee Gas Light Building | |
| 2010 The Cudahy Tower Apartments & Condominiums | |

Visit Shop.MilwaukeeDowntown.com!

The 2021 Warner Marquee ornament is available for \$19.95 by visiting Shop.MilwaukeeDowntown.com or by completing the order form on the following pages. A limited number of past editions are available for \$24.95.

Order Ornaments from Years Past - \$24.95 each



2020 - Hoan Bridge



2019 - Marcus Performing Arts Center



2018 - Fiserv Forum

2017 - Northwestern
Mutual Tower and
Commons



2016 - The Wisconsin Club



2015 - Posner Building



2014 - Iron Block Building



2013 - U.S.
Bank Tower



2012 - Milwaukee County Courthouse



2011 - Milwaukee
Gas Light Building



2010 - The Cudahy Tower
Apartments & Condominiums



2009 - Milwaukee
Federal Building
& U.S. Courthouse



2008 - Milwaukee
County Historical
Society



2007 - Northwestern Mutual
Corporate Headquarters



2006 - Central Library



2005 - Downtown Trolley



2004 - Milwaukee
City Hall



2003 - Cathedral
of St. John the
Evangelist



2002 - Milwaukee Art Museum



2001 - Pabst Theater

PURCHASE YOUR ANNUAL MILWAUKEE DOWNTOWN TREASURE

The 2021 Warner Marquee ornament is available for \$19.95 by visiting shop.milwaukee downtown.com or completing this order form. A limited number of past editions are available for \$24.95.

Save on postage! Ornaments may also be purchased at Milwaukee Downtown, 301 W. Wisconsin Avenue, Suite 106 (414.220.4700), Kloiber Jewelers, 777 E. Wisconsin Avenue (414.276.2457) or Urban Milwaukee, 755 N. Milwaukee Street (414.395.0632). Call ahead for hours of operation.

NAME _____

BILLING ADDRESS _____

CITY _____ STATE/ZIP _____

SHIPPING ADDRESS _____

CITY _____ STATE/ZIP _____

DAYTIME PHONE _____

☐ CHECK ☐ MASTERCARD ☐ VISA EXPIRATION DATE _____

CREDIT CARD NUMBER _____

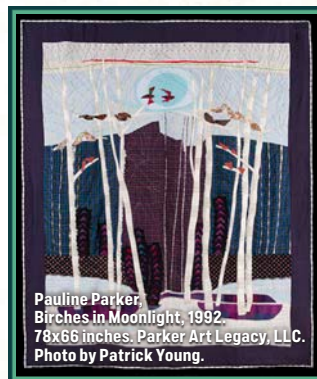
<input type="checkbox"/> 2021 Warner Marquee	x	\$19.95	_____
<input type="checkbox"/> 2020 Hoan Bridge	x	\$24.95	_____
<input type="checkbox"/> 2019 Marcus Performing Arts Center	x	\$24.95	_____
<input type="checkbox"/> 2018 Fiserv Forum	x	\$24.95	_____
<input type="checkbox"/> 2017 Northwestern Mutual Tower and Commons ...	x	\$24.95	_____
<input type="checkbox"/> 2016 The Wisconsin Club	x	\$24.95	_____
<input type="checkbox"/> 2015 The Posner Building	x	\$24.95	_____
<input type="checkbox"/> 2014 Iron Block Building	x	\$24.95	_____
<input type="checkbox"/> 2013 U.S. Bank Tower	x	\$24.95	_____
<input type="checkbox"/> 2012 Milwaukee County Courthouse	x	\$24.95	_____
<input type="checkbox"/> 2011 Milwaukee Gas Light Building	x	\$24.95	_____
<input type="checkbox"/> 2010 The Cudahy Tower Apartments and Condominiums	x	\$24.95	_____
<input type="checkbox"/> 2009 Milwaukee Federal Building and U.S. Courthouse	x	\$24.95	_____
<input type="checkbox"/> 2008 Milwaukee County Historical Society	x	\$24.95	_____
<input type="checkbox"/> 2007 Northwestern Mutual Corporate Headquarters	x	\$24.95	_____
<input type="checkbox"/> 2006 Central Library	x	\$24.95	_____
<input type="checkbox"/> 2005 Downtown Trolley	x	\$24.95	_____
<input type="checkbox"/> 2004 Milwaukee City Hall	x	\$24.95	_____
<input type="checkbox"/> 2003 Cathedral of St. John the Evangelist	x	\$24.95	_____
<input type="checkbox"/> 2002 Milwaukee Art Museum	x	\$24.95	_____
<input type="checkbox"/> 2001 Pabst Theater	x	\$24.95	_____

SUBTOTAL

Number of Ornaments _____
(Shipping and Handling for Each Ornament) _____ x \$5.40

TOTAL (WI sales tax is included in the final sales price.) _____

Make your check or money order payable to Milwaukee Downtown, Inc.
Please do not send cash.
Mail to: Milwaukee Downtown Holiday Ornament
301 W. Wisconsin Avenue, Suite 106, Milwaukee, WI 53203



Pauline Parker
Birches in Moonlight, 1992
78x66 inches, Parker Art Legacy, LLC.
Photo by Patrick Young.

Hanging Out the Laundry by Maeve Jackson

Now through November 28
Saint Kate - The Arts Hotel
414.276.8686 | saintkatearts.com

Through installation, video, and photography, *Hanging Out the Laundry* examines the titular task and unpacks its historical and personal implications.

Tour the Dubbel Dutch Hotel with Historic Milwaukee

Sun, November 28 | 4pm to 6pm
Dubbel Dutch Hotel
817 N. Marshall Street

414.277.7795 | historicmilwaukee.org
Enjoy a docent-led, 30-minute tour of this 1898 English Renaissance Revival Style gem transformed into a hotel and learn about the history and renovation efforts.

Suzanne Rose | Blind Spot: To Pass Among Them

December 4 - February 22
Saint Kate - The Arts Hotel
414.276.8686 | saintkatearts.com

Capturing the gentle presence of the Anthropocene in the Midwest, Rose documents the subtle violence that humans do to their environment and the quiet strength of nature.



The Quilts of Pauline Parker

Now through December 5
Milwaukee Art Museum
414.224.3200 | mam.org

More than thirty objects showcase the artist's expressive approach to quilting, turning a traditionally domestic craft into one that highlighted current events, historical and biblical figures, and her own travels and experiences.



First Impressions: Early Printed Books in Europe

Now through December 12
Milwaukee Art Museum
414.224.3200 | mam.org

A collection of twenty-five objects representing the revolutionization of the printing press.

The Railroad and the Art of Place: Photographs by David Kahler

Now through December 19
Grohmann Museum
414.277.2300 | msoe.edu/grohmann-museum

An exhibition documenting the once thriving industrial rail lines across America's Appalachian coal country.

Delight, Inspire, Educate: The Allis Collection as Catalyst

Now through December 31

Charles Allis Museum

414.278.8295 | charlesallis.org

An exhibition highlighting various aspects of the Allis art collection, from paintings and sculptures to decorative arts objects and print materials.

Beyond Van Gogh: The Immersive Experience

Now through January 9

Wisconsin Center

414.908.6000 | wisconsincenter.com

Be amazed at this one-of-a-kind, immersive exhibition featuring more than 300 of Vincent Van Gogh's iconic artworks.

American Memory: Commemoration, Nostalgia and Revision

Now through January 16

Milwaukee Art Museum

414.224.3200 | mam.org

An examination on how images—paintings, prints, and documentary photographs—shape our memories and understanding of historical and current events.



Visual Sirens: Collections of Final Warnings curated by David Najib Kasir

Now through January 23

Saint Kate – The Arts Hotel

414.276.8686 | saintkatearts.com

An exhibition highlighting eight artists who, in the past twenty years, have endured life through several wars, political upheavals, environmental catastrophes, racial divides, genocides, ethnicities, civil wars, and a global pandemic.

Scrap Yard: Innovators of Recycling

Now through January 30

Jewish Museum Milwaukee

414.390.5730 | jewishmuseummilwaukee.org

An introspective look at the global scrap industry and contemporary green movements.

Villa Incognito: Latent Narratives in the Permanent Collection

Now through March 6

Villa Terrace Decorative Arts
Museum

414.271.3656 | villaterrace.org

An examination of the mansion and a group of objects from the Villa Terrace collection, showing how various forms of imitation, synthesis, and symbolism are at work, and how these strategies work to create an idealized environment.

Sculpture Milwaukee

Now through October 2022

Downtown Milwaukee

sculpturemilwaukee.com

Take a stroll along Wisconsin Avenue to experience world-renowned sculptures.

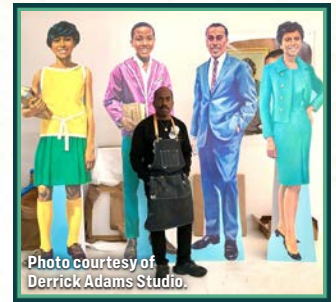
An-My Lê: On Contested Terrain

December 3 – March 27

Milwaukee Art Museum

414.224.3200 | mam.org

A nationally touring exhibition featuring large-format black-and-white and color photographs from across Lê's career, which she has dedicated to exploring the complexity that envelops war.



On Site: Derrick Adams: Our Time Together

Ongoing

Milwaukee Art Museum

414.224.3200 | mam.org

A newly commissioned large-scale wall mural and sculptural installation by Brooklyn-based artist Derrick Adams, featuring a 93-foot work that reframes historical Black narratives.

Milwaukee: Where the Waters Meet

Ongoing

Milwaukee County Historical Society

414.273.8288 | milwaukeehistory.net

Situated on one of the largest freshwater lakes in the world, Milwaukee's past and present have been shaped by our water resources. This feature exhibit looks at water and its place in Milwaukee from both a historical and contemporary perspective.

Off-Road Harley-Davidson

Ongoing

Harley-Davidson Museum

414.287.2789 | h-dmuseum.com

An exhibit telling the history of motorcycles designed for rough roads, the people who rode them and the adventures they shared.

Milwaukee Art Museum Virtual Exhibitions

Ongoing

Milwaukee Art Museum

414.224.3200 | mam.org

See work you will not see in the galleries. Explore artworks and exhibitions virtually at www.mam.org/exhibitions.



HINTZ GIUFFRE

— C P A s —

BUSINESSES • INDIVIDUALS • NON-PROFITS

HINTZ-GIUFFRE.COM

262.367.4829

Family Learning

Kohl's Thank You Thursday

Thu, December 2 | 10am to 5pm
Milwaukee Public Museum

414.278.2728 | mpm.edu

All visitors (excluding groups) receive FREE access to the permanent exhibits of MPM on the first Thursday of every month during Kohl's Thank You Thursday.



Voyage to the Deep

Now through January 9
Milwaukee Public Museum

414.278.2728 | mpm.edu

Experience Voyage to the Deep — a new traveling exhibition about underwater exploration and adventure of the kind immortalized by Jules Verne's novel 20,000 Leagues Under the Sea.



WaterStone Bank Day

Fri, December 17
Betty Brinn Children's Museum
414.390.5437 | bbcmkids.org

A day dedicated to learning to earn, save, spend and share. Families can play in the pretend bank and learn about financial literacy. For added fun, each child gets a fun takeaway for at-home learning. Free with regular admission.

MPM Planetarium: A to Z Astronomy

Now through February 17
Milwaukee Public Museum

414.278.2728 | mpm.edu

Explore the depths of space in a wild ride through the universe! Planetarium programming is included with Museum admission. Programs show every hour from 10:30 a.m. to 4:30 p.m., and are first-come, first-served with limited capacity.

MPM Dome Theater: Ocean Odyssey

Now through February 17
Milwaukee Public Museum

414.278.2728 | mpm.edu

Encounter the wonders of the southern sea! Learn more about our global network of ocean currents that are crucial to both life in the sea and on land. Giant-screen films are sold separately from Museum admission and can be reserved online, by phone, or in-person.

MPM Dome Theater: Superpower Dogs

Now through February 17
Milwaukee Public Museum

414.278.2728 | mpm.edu

Join an immersive giant-screen adventure to experience the life-saving superpowers and extraordinary bravery of some of the world's most amazing dogs. Giant-screen films are sold separately from Museum admission and can be reserved online, by phone, or in-person.

Community of Curiosity

Ongoing
Milwaukee Public Museum

414.278.2728 | mpm.edu

Every month, MPM offers new videos, activities, and information about one of their beloved exhibits. You're sure to be included in a community of people curious about the natural world and who are ready to explore when you enjoy this monthly programming from home.



CELEBRATE THE HOWL-IDAYS WITH YOUR CLOSEST PAL



DONATE HERE

This holiday season, make plans to celebrate with your closest pal. Visit www.mkedogpark.com to learn about pup-friendly pop-ups and festive parties. And while you're there, toss us a bone to support our fundraising efforts and give Downtown the gift of its first dog park.

www.mkedogpark.com



Mondo Lucha

Wed, November 24 | 8pm
Turner Hall Ballroom
414.286.3663 | pabsttheatergroup.com

Flat Out Friday

Fri, December 3 | 7pm
Fiserv Forum
414.227.0511 | fiservforum.com



WWE Monday Night Raw

Mon, December 20 | 6:30pm
Fiserv Forum
414.227.0511 | fiservforum.com

Kwik Trip Holiday Face-Off College Hockey Tournament

December 28 – 29
Fiserv Forum
414.227.0511 | fiservforum.com

Harlem Globetrotters

Fri, December 31 | 1pm & 6pm
Fiserv Forum
414.227.0511 | fiservforum.com



Milwaukee Bucks

Fiserv Forum
800.4NBATIX | nba.com/bucks

vs. Oklahoma City Thunder
Fri, November 19 | 7pm

vs. Orlando Magic
Sat, November 20 | 7pm

vs. Orlando Magic
Mon, November 22 | 7pm

vs. Detroit Pistons
Wed, November 24 | 7pm



vs. Charlotte Hornets
Wed, December 1 | 7pm

vs. Miami Heat
Sat, December 4 | 7pm

vs. Cleveland Cavaliers
Mon, December 6 | 7pm

vs. Indiana Pacers
Wed, December 15 | 7pm

vs. Cleveland Cavaliers
Sat, December 18 | 8pm

vs. Houston Rockets
Wed, December 22 | 7pm

vs. Boston Celtics
Sat, December 25 | 1:30pm

vs. New Orleans Pelicans
Sat, January 1 | 5:30pm



Milwaukee Wave

UWM Panther Arena
414.224.WAVE | milwaukeewave.com

vs. Baltimore Blast
Sat, December 18 | 6:05pm

vs. Kansas City Comets
Fri, December 31 | 3:05pm



Milwaukee Admirals

UWM Panther Arena
414.227.0550 | milwaukeeadmirals.com

vs. Grand Rapids Griffins
Wed, November 24 | 7pm

vs. Rockford Ice Hogs
Wed, December 1 | 7pm

vs. Iowa Wild
Fri, December 10 | 7pm

vs. Iowa Wild
Sat, December 11 | 6pm

vs. Chicago Wolves
Fri, December 17 | 7pm

vs. Rockford Ice Hogs
Thu, December 30 | 6pm

vs. Grand Rapids Griffins
Sat, January 1 | 6pm

Marquette University – Men's Basketball

Fiserv Forum
414.288.4668 | gomarquette.com

vs. Northern Illinois
Sat, November 27 | 7pm

vs. Jackson State
Tue, November 30 | 8pm

vs. UCLA
Sat, December 11 | 1:30pm

vs. UCONN
Tue, December 21 | 8pm

vs. Creighton
Sat, January 11 | 11am

Marquette University – Women's Basketball

Al McGuire Center
414.288.4668 | gomarquette.com

vs. Xavier
Fri, December 3 | 7pm

vs. Butler
Sun, December 5 | 2pm

vs. North Dakota
Sat, December 11 | 4pm

vs. Cincinnati
Wed, December 22 | 1pm



UWM Men's Basketball

UWM Panther Arena
414.299.5886 | mkepanthers.com

vs. Alcorn State
Sun, November 28 | 1pm

vs. Youngstown State
Thu, December 2 | 7pm

vs. Robert Morris
Sat, December 4 | 11am

vs. Rhode Island
Mon, December 13 | 7pm

vs. Saint Xavier (Ill.)
Thu, December 23 | 1pm



MSOE Men's Basketball

Hotchkiss Arena
800.332.6763 | go-raiders.com

vs. Concordia Wisconsin
Wed, December 8 | 7pm

vs. Benedictine
Sat, December 11 | 4:15pm

vs. Viterbo
Thu, December 30 | 7pm

MSOE Women's Basketball

Hotchkiss Arena
800.332.6763 | go-raiders.com

vs. Concordia Wisconsin
Tue, December 7 | 7pm

vs. Benedictine
Sat, December 11 | 2pm

vs. Chicago
Tue, December 14 | TBA



Photo by Milwaukee Athletics.

UWM Women's Basketball

Klotsche Center
414.299.5886 | mkepanthers.com

vs. Wright State
Thu, November 18 | 7pm

vs. Northern Kentucky
Sat, November 20 | 2pm

vs. Wisconsin
Wed, November 24 | 6pm

vs. Marquette
Wed, December 8 | 7pm

vs. Oakland
Thu, December 30 | 7pm

vs. Detroit Mercy
Sat, January 1 | 2pm



MSOE Men's Hockey

Kern Center
800.332.6763 | go-raiders.com

vs. Lawrence University
Sat, November 20 | 7pm

vs. Saint Mary's (Minn.)
Tue, December 7 | 7pm



Your Window to the World

Fri, December 31 | 5pm to 12:30am

The Pfister Hotel - Blu

414.273.8222 | thepfisterhotel.com
Ring in the New Year in style at Blu at The Pfister Hotel! Enjoy special packages including live music, reserved tables, premium champagne, party favors, and a dessert display. VIP packages with stellar views available.

Horseshoes & Hand Grenades

Fri, December 31 | 8pm

The Pabst Theater

414.286.3663 | pabsttheatergroup.com
For the first time since NYE 2018, Horseshoes & Hand Grenades returns to the historic Pabst Theater for their traditional hootenanny.

New Year's at Mason Street Grill

Fri, December 31 | 5pm to 10pm

Sat, January 1 | 12pm to 4pm (bar only); 4pm to 9pm (dinner)

Mason Street Grill

414.298.3131 | masonstreetgrill.com
Mason Street Grill is the place to be for New Year's. Reservations to enjoy our wood-grilled classics are available for all your celebrations. Ring in the New Year with live music in the bar and a champagne toast at midnight.



Dining & Nightlife

Dining & Nightlife

Brewery District

Best Place at the Historic Pabst Brewery

917 W. Juneau Avenue
414.630.1609 | bestplacemilwaukee.com

Bento Xpert

1125 N. 9th Street, Unit F
414.935.2823 | facebook.com/Bentoxpert

Bottle House 42

1130 N. 9th Street
414.988.1550 | bottlehouse42.com

Central Waters Brewing Co.

1037 W. Juneau Avenue
414.271.3174 | centralwaters.com

Coaches 1125

1125 N. 9th Street
414.708.5541 | facebook.com/coaches1125

Marco Pollo

1125 N. 9th Street, Unit E
414.935.2823 | marcopollomke.com

Meat on the Street

1125 N. 9th Street
414.477.6717 | motscatering.com

MKE Brewing

1128 N. 9th Street
414.226.2337 | mkebrewing.com

Cathedral Square District

600 EAST Café

600 E. Wisconsin Avenue
414.224.6594 | 600eastcafe.com

Alem Ethiopian Village

307 E. Wisconsin Avenue
414.224.5324 | alem-ethiopianvillage.com

Amilinda

315 E. Wisconsin Avenue
414.369.3683 | amilinda.com



Artisan Ramen

530 E. Mason Street
414.888.8800 | artisan-ramen.com

Bacchus

925 E. Wells Street
414.765.1166 | bacchusmke.com



Belmont Tavern

784 N. Jefferson Street
414.988.6161 | thebelmonttavern.com

Blu

424 E. Wisconsin Avenue
414.298.3196 | blumilwaukee.com

Bollywood Grill

1038 N. Jackson Street
414.271.8200 | bollywoodgrill.us

Brunch

714 N. Milwaukee Street
414.210.5381 | brunchitup.com

Buckley's

801 N. Cass Street
414.277.1111 | buckleymilwaukee.com

Café at the Pfister

424 E. Wisconsin Avenue
414.273.8222 | thepfisterhotel.com

Café at the Plaza

1007 N. Cass Street
414.276.2101 | plazahotelmilwaukee.com

Carnevora

718 N. Milwaukee Street
414.223.2200 | carnevora.com



Central Standard Distillery Crafthouse & Kitchen

320 E. Clybourn Street
414.455.8870 | thecentralstandard.com

Chipotle

600 E. Ogden Avenue
414.223.4710 | chipotle.com



Classy Girl Cupcakes

825 N. Jefferson Street
414.270.1877 | classygirlcupcakes.com

County Clare Irish Inn & Pub

1234 N. Astor Street
414.272.5273 | countyclare-inn.com

Cubanitas

728 N. Milwaukee St
414.225.1760 | getbianchini.com

Downtown Kitchen

777 E. Wisconsin Avenue
414.287.0303 | bartolottas.com

East Town Kitchen & Bar

323 E. Wisconsin Avenue
414.847.3162 | easttownkitchenandbar.com

Einstein Bros Bagels

544 E. Ogden Avenue
414.276.9888 | einsteinbros.com

Electric Lime Taqueria

730 N. Milwaukee Street

Elsa's

833 N. Jefferson Street
414.765.0615 | elsas.com

Fairgrounds Café

916 E. State Street
414.395.3003 | fairgrounds.cafe

Fiddleheads Coffee

790 N. Water Street
414.210.4509 | fiddleheadscoffee.com

Flannery's

425 E. Wells Street
414.278.8586 | flannerysmilwaukee.com

Freshii

250 E. Wisconsin Avenue
414.921.0819 | freshii.com

Dining & Nightlife

Fusion Sushi & Deli

100 E. Wisconsin Avenue
414.224.6330

Harbor House

550 N. Harbor Drive
414.395.4900 | bartolottas.com

Indulge Wine Room

708 N. Milwaukee Street
414.390.9463 | getbianchini.com

Jamba

544 E. Ogden Avenue
414.800.7991 | jamba.com



Jersey Mike's

544 E. Ogden Avenue
414.539.3253 | jerseylikes.com

Jimmy John's

1425 N. Jefferson Street
414.347.1234 | jimmyjohns.com

The Knick

1030 E. Juneau Avenue
414.272.0011 | theknickrestaurant.com

Lucid Light Lounge

729 N. Milwaukee Street
414.763.4545 | lucidmke.com

Mason Street Grill

425 E. Mason Street
414.298.3131 | masonstreetgrill.com

Monica's on Astor

1228 N. Astor Street
414.765.9402

Noodles

544 E. Ogden Avenue
414.273.9705 | noodles.com

Ouzo Café

776 N. Milwaukee Street
414.272.6896 | ouzocafe.com

Panera Bread

600 E. Ogden Avenue
414.224.0200 | panerabread.com

Pita Pit

231 E. Wisconsin Avenue
414.930.0910 | pitapitusa.com

RARE Steakhouse

833 E. Michigan Street
414.273.7273 | raresteaks.com

Real Chili

419 E. Wells Street
414.271.4042 | realchilimilwaukee.com

Room Seven

780 N. Jefferson Street
414.775.0829 | plumlounge.com

Shah Jee's

770 N. Jefferson Street
414.271.5354 | shahjeesonjefferson.com

The Social – Hilton Garden Inn Milwaukee Downtown

611 N. Broadway
414.271.6611 | hilton.com

The Sofie

777 N. Jefferson Street
414.930.0683 | thesofie.com

Space Time Coffee

819 N. Marshall Street
spacetimecoffee.com

SportClub

750 N. Jefferson Street
414.808.1588 | sportclubmke.com

Starbucks

544 E. Ogden Avenue
414.221.9099 | starbucks.com

Starbucks

323 E. Wisconsin Avenue
414.278.5999 | starbucks.com

Starbucks

720 E. Wisconsin Avenue
414.208.7346 | starbucks.com

Stella Van Buren

550 N. Van Buren Street
414.847.5622 | stellavanburen.com

Subway

1200 N. Van Buren Street
414.220.4555 | subway.com

Swingin' Door Exchange

219 E. Michigan Street
414.276.8150 | swingindoorexchange.com

Taylor's

795 N. Jefferson Street
414.271.2855 | taylorsmilwaukee.com

Third Coast Provisions

724 N. Milwaukee Street
414.323.7434 | thirdcoastprovisions.com

This Is It!

418 E. Wells Street
414.278.9192 | thisisitbar.com

Tua Pasta

100 E. Wisconsin Avenue
414.988.4016 | tuapastatp.com



Tupelo Honey

511 N. Broadway
414.207.4604 | tupelohoneycafe.com

Victor's on Van Buren

1230 N. Van Buren Street
414.272.2522 | victorsonvanburen.com

Ward's House of Prime

540 E. Mason Street
414.223.0135 | wardshouseofprime.com

Zarletti

741 N. Milwaukee Street
414.225.0000 | zarletti.net

Convention Center District

414 Bar + Kitchen

503 N. Plankinton Avenue
414.223.4484 | cambriamilwaukee.com

Aperitivo

311 N. Plankinton Avenue
414.276.4400 | aperitivomke.com

Avenue Bar and Grill

611 W. Wisconsin Avenue
414.271.7327 | avenuemilwaukee.com

BB's (Build-a-Breakfast/Build-a-Burger)

633 W. Wisconsin Avenue
414.270.1070 | bbmilwaukee.com

Benihana

850 N. Plankinton Avenue
414.270.0890 | benihana.com

The Capital Grille

310 W. Wisconsin Avenue
414.223.0600 | thecapitalgrille.com

DOC's Commerce Smokehouse

754 N. Vel R. Phillips Avenue
414.935.2029 | docsbbq.net

Domino's

719 W. Wisconsin Avenue
414.271.8990 | dominos.com

Dunkin'

622 W. Wisconsin Avenue
414.347.1599 | dunkindonuts.com

Explorium Brewpub

143 W. St. Paul Avenue
414.423.1365 | exploriumbrew.com

Gyro MKE

700 W. Wisconsin Avenue
414.273.4976 | gyromke.com



Dining & Nightlife

Hilton Milwaukee - The Café

509 W. Wisconsin Avenue
414.271.7250 | hiltonmilwaukee.com

Hyatt Regency - Bistro 333

333 W. Wisconsin Avenue
414.270.6130 | hyatt.com

Major Goolsby's

340 W. Kilbourn Avenue
414.271.3414 | majorgooolsbys.com

Miller Time Pub & Grill

509 W. Wisconsin Avenue
414.271.2337
milwaukee.millertimepubandgrill.com

Milwaukee ChopHouse

633 N. 5th Street
414.226.2467 | milwaukeechophouse.com

Mo's, A Place For Steaks

720 N. Plankinton Avenue
414.272.0720 | mosaplaceforsteaks.com

Mo's Irish Pub

142 W. Wisconsin Avenue
414.272.0721 | mosirishpub.com

Potbelly

135 W. Wisconsin Avenue
414.226.0014 | potbelly.com

Starbucks

509 W. Wisconsin Avenue
414.390.1804 | starbucks.com



Stone Creek Coffee

442 N. 5th Street
414.431.2157 | stonecreekcoffee.com

Xankia

222 W. Wells Street
414.817.0241 | xankiawi.com

Deer District/ Old World Third Street

3rd Street Market Hall

— *coming soon!*
275 W. Wisconsin Avenue
414.224.0384 | 3rdstmarkethall.com

Aloft Milwaukee Downtown - WXYZ Bar

1230 N. Old World Third Street
414.226.0122 | marriott.com

The Beer Garden

1133 N. Old World Third Street
414.908.0401 | thebeergardenmke.com

Brick 3 Pizza

1107 N. Old World Third Street
414.224.6040 | brick3pizza.com

Buck Bradley's

1019 N. Old World Third Street
414.224.8500 | buckbradleys.com

Calderone Club

842 N. Old World Third Street
414.273.3236 | calderoneclub.net

Canary Coffee Bar

720 N. Old World Third Street
414.426.8389 | canarycoffeebar.com

Carson's Ribs

301 W. Juneau Avenue
414.223.3311 | ribs.com

Deer Camp

1023 N. Old World Third Street
414.316.9900 | campbarmke.com

Drink Wisconsinly Pub

320 W. Highland Avenue
414.409.1740 | drinkwi.pub

George Webb

812 N. Old World Third Street
414.278.0225 | georgewebb.com

Good City Brewing

333 W. Juneau Avenue
414.539.4343 | goodcitybrewing.com

The King And I

830 N. Old World Third Street
414.276.4181 | kingandirestaurant.com

The Loaded Slate

1137 N. Old World Third Street
414.273.5700 | theloadedslate.com

Mader's Restaurant

1041 N. Old World Third Street
414.271.3377 | madersrestaurant.com

The MECCA

Sports Bar and Grill
1134 N. Vel R. Phillips Avenue
414.908.0401 | themeccamke.com



Milwaukee Brat House

1013 N. Old World Third Street
414.273.8709 | milwaukeebrathouse.com

Oak Barrel Public House

1033 N. Old World Third Street
414.897.8320 | oakbarrelmilwaukee.com

Old German Beer Hall

1009 N. Old World Third Street
414.226.2728 | oldgermanbeerhall.com

RWB MKE

1044 N. Old World Third Street
414.226.6044 | rwbmke.com

San Giorgio

838 N. Old World Third Street
414.276.2876 | sangiorgiopizza.com

Taco Mike's

1001 N. Old World Third Street
414.763.3325 | tacomikes.com

Third Street Tavern

1110 N. Old World Third Street
414.897.8137 | thirdstreettavernmke.com

Uncle Buck's

1125 N. Old World Third Street
414.988.0355 | unclebucksouthird.com

Who's on Third

1007 N. Old World Third Street
414.897.8373 | whosonthirdmke.com

Water Street District

AJ Bombers

1247 N. Water Street
414.221.9999 | ajbombers.com

Alderaan Coffee

1560 N. Water Street
414.395.9955 | aldaeraancoffee.com

BarNone

1139 N. Water Street
414.226.6969 | barnonemilwaukee.com

Birch + Butcher

459 E. Pleasant Street
414.323.7372 | birchonpleasant.com

Brothers

1213 N. Water Street
414.224.1690 | brothersbar.com

Brownstone Social Lounge

524 N. Water Street
414.210.4824
facebook.com/brownstonesociallounge

Buffalo Wild Wings

1123 N. Water Street
414.277.0293 | buffalowildwings.com

China Gourmet

117 E. Wells Street
414.272.1688 | china-gourmet.com

The Coffee Bean

624 N. Water Street
414.276.2233 | coffeebean.com

Colour Palate

789 N. Water Street
414.502.8750 | colourpalate.com

District on Water

628 N. Water Street
414.252.0145

Duke's on Water

158 E. Juneau Avenue
414.221.0625
facebook.com/dukesonwater

Dunkin'

111 E. Wisconsin Avenue
414.224.7924 | dunkindonuts.com

Elwood's Liquor and Tap

1111 N. Water Street
414.810.1436

Dining & Nightlife

The Fatty Patty

221 E. Juneau Avenue
414.522.1133 | fattypattymke.com

FORE! Milwaukee

530 N. Water Street
414.272.3673 | foremilwaukee.com

Grassroots Salad Company

607 N. Water Street
414.249.4464 | ieatgrassroots.com

The Harp

113 E. Juneau Avenue
414.289.0700 | theharpirishpub.com

Ian's Pizza

146 E. Juneau Avenue
414.727.9200 | ianspizza.com

Jimmy John's

767 N. Water Street
414.227.1166 | jimmyjohns.com

Lowcountry Milwaukee

1114 N. Water Street
414.252.0015 | lowcountrychicago.com/milwaukee-wi

McGillycuddy's

1135 N. Water Street
414.278.8888 | mcgillycuddysmilwaukee.com

Pourman's

1127 N. Water Street
414.216.4316 | pourmansmke.com

Qdoba

1150 N. Water Street
414.389.8744 | qdoba.com



Red Rock Saloon

1227 N. Water Street
414.431.0467 | redrockmilwaukee.com

Rock Bottom

Restaurant and Brewery
740 N. Plankinton Avenue
414.276.3030 | rockbottom.com

Rodizio Grill

777 N. Water Street
414.431.3106 | rodiziogrill.com

Saint Kate - the Bar

139 E. Kilbourn Avenue
414.291.4797 | saintkatearts.com

Saint Kate - Giggly

139 E. Kilbourn Avenue
414.431.1211 | saintkatearts.com

Saint Kate - Proof Pizza

139 E. Kilbourn Avenue
414.270.4433 | saintkatearts.com



SafeHouse

779 N. Front Street
414.271.2007 | www.safe-house.com

Scooters Pub

154 E. Juneau Avenue
414.274.7201
facebook.com/scooterspubmke

Starbucks

920 N. Water Street
414.272.0232 | starbucks.com

Subway

710 N. Plankinton Avenue
414.212.8495 | subway.com

Trinity Three Irish Pubs

125 E. Juneau Avenue
414.278.7033 | trinitythreeirishpubs.com

Tropic - coming soon!

518 N. Water Street

Vagabond

1122 N. Edison Street
414.223.1122 | vagabondmke.com

Water Street Brewery

1101 N. Water Street
414.272.1195 | waterstreetbrewery.com

Waterfront Deli

761 N. Water Street
414.220.9300 | milwaukee waterfrontdeli.com



THE
PABST
THEATER
GROUP

MILWAUKEE'S FAVORITE
HOLIDAY TRADITION RETURNS!

TICKETS
NOW ON SALE

Jay Franke &
David Herro
PRESENT

A CHRISTMAS CAROL

A NOVEL BY
Charles Dickens
ADAPTED & DIRECTED BY
Mark Clements

PRESENTED BY
**WELLS
FARGO**

NOV. 30 to
DEC. 24, 2021

AT **PABST**
Theater

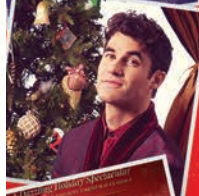
MILWAUKEE
REP

www.MilwaukeeRep.com | 414-224-9490



2 SHOWS NOV. 21 | RIVERSIDE THEATER

THE ELF ON THE SHELF: A CHRISTMAS MUSICAL



DECEMBER 7 | RIVERSIDE THEATER

A VERY DARREN CRISSMAS TOUR



DECEMBER 8 | RIVERSIDE THEATER

A MAGICAL CIRQUE CHRISTMAS



DECEMBER 12 | RIVERSIDE THEATER

MANHEIM STEAMROLLER



DECEMBER 19 | RIVERSIDE THEATER

MARTINA McBRIDE CHRISTMAS

Shopping

Shopping

APPAREL:

Althea's Fine Lingerie
777 N. Jefferson Street
414.935.2800 | altheasfinelingerie.com

Brew City Brand
400 N. Water Street
414.220.9075 | brewcityonline.com

Bucks Pro Shop
1111 Vel R. Phillips Avenue
414.918.6401 | shop.bucks.com

Miss Ruby Bridal Boutique
313 N. Plankinton Avenue, Suite 203
414.755.2900 | missrubyboutique.com



The Sophisticated Man
322 E. Wisconsin Avenue
414.271.4490
thesophisticatedmanboutique.com

TJ Maxx
161 W. Wisconsin Avenue
414.347.9603 | tjmaxx.com

BOOKS & MUSIC:

Downtown Books
624 N. Broadway Street
414.224.1799 | downtownbooksonline.com

Musical Memories
833 E. Kilbourn Avenue
414.271.0666

FOOTWEAR:

Allen Edmonds
424 E. Wisconsin Avenue
414.897.5650 | allenedmonds.com

Footaction
275 W. Wisconsin Avenue
414.221.9370 | footaction.com



Rerocc
773 N. Jefferson Street
414.800.4369 | rerocc.com

Shoo
241 N. Broadway
414.765.2355 | shoostore.com

Trusted Kicks
532 N. Water Street
414.349.9590 | trustedkicks.com

FURNISHINGS & DÉCOR:

Design Within Reach
167 N. Broadway
414.224.5353 | dwr.com

Iannelli's Custom Shoppe
625 N. Broadway
414.272.0543

Luminosity, Inc.
207 E. Buffalo Street
414.278.0992

Residence Milwaukee
123 E. Wells Street
414.444.5010

Restoration Hardware
224 E. Chicago Street
414.808.3890 | restorationhardware.com

Scandinavia Fine Furniture
767 N. Jefferson Street
414.276.7226

Shabahang & Sons Oriental Rugs
601 E. Ogden Avenue
414.347.1300 | shabahangorientalrugs.com

West Elm
342 N. Water Street, Suite 100
414.224.0216 | westelm.com

GOURMET FOODS:

Edible Arrangements
722 N. Water Street
414.225.0300 | ediblearrangements.com

Fresh Thyme Farmers Market
470 E. Pleasant Street
414.290.3999 | freshtyme.com

Metro Market
1123 N. Van Buren Street
414.273.1928 | metromarket.net

Milwaukee Public Market
400 N. Water Street
414.336.1111 | milwaukeepublicmarket.org

Penzeys Spices
638 N. Water Street
414.375.4896 | penzeys.com

The Spice House
1031 N. Old World Third Street
414.272.0977 | thespicehouse.com

Usinger's Famous Sausage
1030 N. Old World Third Street
414.276.9100 | usinger.com

Wisconsin Cheese Mart
215 W. Highland Avenue
414.272.3544 | wisconsincheesemart.com

HEALTH & WELLNESS:

Walgreens
275 W. Wisconsin Avenue
414.273.5426 | walgreens.com



GIFTS & ACCESSORIES:

Best Place at the Historic Pabst Brewery
917 W. Juneau Avenue
414.223.4709 | bestplacemilwaukee.com



Betty Brinn Children's Museum Gift Shop
929 E. Wisconsin Avenue
414.390.5437
betty-brinns-gift-shoppe.myshopify.com

Central Standard Craft Distillery
320 E. Clybourn Street
414.455.8870 | centralstandard.com

Discovery World Gift Shop
500 N. Harbor Drive
414.765.8770 | discoveryworld.org

Historic Milwaukee
235 E. Michigan Street
414.277.7795 | historicmilwaukee.org

Milwaukee Art Museum Store
700 N. Art Museum Drive
414.224.3210 | store.mam.org

Milwaukee Public Museum Marketplace
800 W. Wells Street
414.278.2795 | mpm.edu

Stone Creek Coffee – Factory Café
422 N. 5th Street
414.431.2157 | stonecreekcoffee.com

Uhle Tobacco Company
114 W. Wisconsin Avenue
414.273.6665 | uhles.com

Urban Milwaukee: The Store
755 N. Milwaukee Street
414.395.0632 | urbanmilwaueethestore.com

Shopping

JEWELRY:

Kessler's Diamonds

450 E. Mason Street

414.721.9450 | kesslersdiamonds.com

Kloiber Jewelers

777 E. Wisconsin Avenue

414.276.2457 | kloiberjewelers.com



Powers Jewelry Designers

301 E. Wisconsin Avenue

414.272.4510 | milwaukee-jewelry.com

Planet Bead

710 N. Milwaukee Street

414.273.2323 | planetbead.com

Steins Jewelry and Loan

715 W. Wisconsin Avenue

414.276.7296

PAPER & SHIPPING SUPPLIES:



Broadway Paper

191 N. Broadway

414.277.7699 | broadwaypaper.com

FedEx

312 E. Wisconsin Avenue

414.270.0404 | fedex.com/office

SPORTING GOODS:

Fore! Milwaukee

530 N. Water Street

414.313.1553 | foremilwaukee.com

Vulture

651 N. Plankinton Avenue

414.301.1661 | vulturespace.org

SALONS & SPAS:

East Town Spa

718 E. Wells Street

414.271.4247 | easttownspa.com

GLOSS Nail Spa

1545 N. Water Street

414.273.1741 | glossnailspa.net



Institute of Beauty and Wellness

327 E. St. Paul Avenue

414.227.2889 | ibw.edu

Neroli Salon & Spa

327 E. St. Paul Avenue

414.319.7559 | nerolispa.com

Salon Blanc

1541 N. Water Street

414.323.4241 | salonblancmke.com

SCOTTFREE Salon

726 N. Milwaukee Street

414.223.0896 | scottfreesalon.com

Violet Beauty Lounge

514 N. Water Street

414.239.8066 | violetbeautymke.com

WELL Spa + Salon

424 E. Wisconsin Avenue

414.277.9207 | pfisterwellspa.com

75 YEARS



STEIN'S

GARDEN & HOME

A CHRISTMAS TRADITION



SHOPSTEINS.COM

Hotels

Hotels

**Aloft Hotel
Milwaukee Downtown**
1230 N. Old World Third Street
414.226.0122 | aloftmilwaukee.com



The Astor Hotel
924 E. Juneau Avenue
414.271.4220 | theastorhotel.com

The Brewhouse Inn & Suites
1215 N. 10th Street
414.810.3350 | brewhousesuites.com

**Cambria Hotel
Milwaukee Downtown**
503 N. Plankinton Avenue
414.223.4484 | cambriamilwaukee.com



County Clare Irish Hotel
1234 N. Astor Street
414.272.5273 | countyclare-inn.com

**Courtyard by Marriott
Downtown**
300 W. Michigan Street
414.291.4122 | marriott.com

**DoubleTree by Hilton
Milwaukee Downtown**
611 W. Wisconsin Avenue
414.273.2950 | doubletreemilwaukee.com

Dubbel Dutch
817 N. Marshall Street
414.376.3439 | thedubbeldutch.com

Drury Plaza Hotel
700 N. Water Street
414.224.7864 | druryhotels.com



**Fairfield Inn & Suites
by Marriott**
710 N. Old World Third Street
414.626.7100 | marriott.com/fairfieldinn

Hampton Inn & Suites
176 W. Wisconsin Avenue
414.271.4656 | hilton.com

**Hilton Garden Inn
Milwaukee Downtown**
611 N. Broadway
414.271.6611
hiltongardeninnmilwaukee.com

**Hilton Milwaukee
City Center**
509 W. Wisconsin Avenue
414.271.7250 | hiltonmilwaukee.com

Homewood Suites by Hilton
500 N. Water Street
414.563.1090 | hilton.com

Hotel Metro
411 E. Mason Street
414.272.1937 | hotelmetro.com

**Hyatt Place
Milwaukee Downtown**
800 W. Juneau Avenue
414.808.3880 | hyatt.com

Hyatt Regency Milwaukee
333 W. Kilbourn Avenue
414.276.1234 | milwaukee.hyatt.com

Journeyman Hotel
310 E. Chicago Street
414.291.3970 | journeymanhotel.com

**Kinn Guesthouse MKE
– Opening soon!**
600 N. Broadway
855.546.6653 | kinnguesthouse.com

**The Knickerbocker
on the Lake**
1028 E. Juneau Avenue
414.276.8500 | knickerbockeronthelake.com

**Marriott
Milwaukee Downtown**
625 N. Milwaukee Street
414.278.5999 | marriott.com

The Pfister Hotel
424 E. Wisconsin Avenue
414.273.8222 | thepfisterhotel.com

**The Plaza
Hotel & Apartments**
1007 N. Cass Street
414.276.2101 | plazahotelmilwaukee.com

**Residence Inn
Milwaukee Downtown**
648 N. Plankinton Avenue
414.224.7890 | marriott.com

Saint Kate – The Arts Hotel
139 E. Kilbourn Avenue
414.276.8686 | saintkatearts.com

SpringHill Suites by Marriott
744 N. Vel R. Phillips Avenue
414.273.9811 | marriott.com

Tru by Hilton
515 N. Jefferson Street
414.240.8331 | hilton.com

The Westin Milwaukee
550 N. Van Buren Street
414.224.5224 | westinmilwaukee.com



The Freshest Trees in Town!

Visit one of our Old World Holiday Tree Lots and choose from a wide selection of Wisconsin's own fresh-cut Fraser firs, evergreen wreaths, garland and Christmas decor, with options well suited to downtown living spaces and business settings.



Ideal Property Management

ideal-landscaping.net • 262-251-3578

Visit our website for more information about
Tree Lot locations, special events and tree selections


SAVE \$5

on any purchase from an
Ideal Tree Lot with this ad

THREE MILWAUKEE LOCATIONS:
DOWNTOWN, SHOREWOOD
AND WHITEFISH BAY

Ideal's Tree Lots open daily Nov. 23 - Dec. 24 from 10am - 8pm
(excluding Thanksgiving on Nov. 25)





All the oohs,
aahs, and
mmms you
can find.

Unique
Unites



VISIT
Milwaukee

VISIT MILWAUKEE IS A
PROUD SPONSOR OF HOLIDAY LIGHTS
DISCOVER MORE AT [VISITMILWAUKEE.ORG](https://www.visitmilwaukee.org)



MILWAUKEE
HOLIDAY LIGHTS
FESTIVAL

2021 SPONSORS

Presenting Sponsor



Park Sponsors



**We Energies
Foundation**



**Ideal
Property
Management**



MADISON MEDICAL
MILWAUKEE • MEQUON

Santa's Mailbox Sponsors



**Educators
CREDIT UNION**



Media Sponsors



Contributing Sponsors



**Taste
of Home**



KUJAWA ENTERPRISES, INC.
LANDSCAPE | SNOW | INTERIOR | HOLIDAY

Milwaukee
FOOD & CITY TOURS



**MILWAUKEE COUNTY
PARKS**



**THE
PABST
THEATER
GROUP**



Milwaukee Downtown, BID #21
301 W. Wisconsin Avenue, Suite 106
Milwaukee, WI 53203 | 414.220.4700



MILWAUKEE HOLIDAY LIGHTS FESTIVAL
NOVEMBER 18, 2021 – JANUARY 1, 2022
WWW.MILWAUKEEHOLIDAYLIGHTS.COM
#MKEHOLIDAYLIGHTS